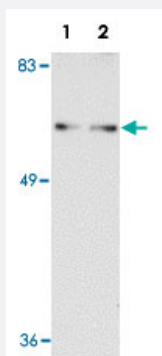


SHOC2 polyclonal antibody

Catalog # PAB16760

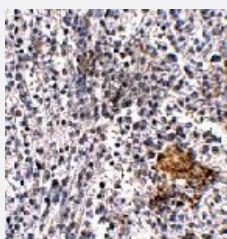
Size 100 ug

Applications



Western Blot (Cell lysate)

Western blot analysis of SHOC2 in Jurkat cell lysate with SHOC2 polyclonal antibody (Cat # PAB16760) at (A) 1 and (B) 2 ug/mL .



Immunohistochemistry

Immunohistochemistry of SHOC2 in human spleen tissue with SHOC2 polyclonal antibody (Cat # PAB16760) at 5 ug/mL .

Specification

Product Description

Rabbit polyclonal antibody raised against synthetic peptide of SHOC2.

Immunogen

A synthetic peptide corresponding to N-terminus 21 amino acids of human SHOC2.

Host

Rabbit

Reactivity

Human, Mouse, Rat

Form

Liquid

Recommend Usage

Western Blot (1-2 ug/mL)

The optimal working dilution should be determined by the end user.

Storage Buffer	In PBS (0.02% sodium azide)
Storage Instruction	Store at 4°C for three months. For long term storage store at -20°C. Aliquot to avoid repeated freezing and thawing.
Note	This product contains sodium azide: a POISONOUS AND HAZARDOUS SUBSTANCE which should be handled by trained staff only.

Applications

- Western Blot (Cell lysate)

Western blot analysis of SHOC2 in Jurkat cell lysate with SHOC2 polyclonal antibody (Cat # PAB16760) at (A) 1 and (B) 2 ug/mL .

- Immunohistochemistry

Immunohistochemistry of SHOC2 in human spleen tissue with SHOC2 polyclonal antibody (Cat # PAB16760) at 5 ug/mL .

- Enzyme-linked Immunoabsorbent Assay

Gene Info — SHOC2

Entrez GeneID	8036
Protein Accession#	NP_031399
Gene Name	SHOC2
Gene Alias	FLJ60412, KIAA0862, SIAA0862, SOC-2, SOC2, SUR-8, SUR8
Gene Description	soc-2 suppressor of clear homolog (C. elegans)
Omim ID	602775
Gene Ontology	Hyperlink
Gene Summary	C. elegans
Other Designations	OTTHUMP00000020481 soc-2 suppressor of clear homolog suppressor of clear, C. elegans, homolog of

Publication Reference

- [A phosphatase holoenzyme comprised of Shoc2/Sur8 and the catalytic subunit of PP1 functions as an M-Ras effector to modulate Raf activity.](#)

Rodriguez-Viciano P, Oses-Prieto J, Burlingame A, Fried M, McCormick F.

Molecular Cell 2006 Apr; 22(2):217.

Application: IP, WB-Tr, Human, A-427, A-549, ASPC1, HEK 293T, HeLa, HepG2, HPAF, HT1080, MDA-MB-231, MiaPaca1, PANC1, RD, SKMEL-2, SW480 cells

- [The leucine-rich repeat protein SUR-8 enhances MAP kinase activation and forms a complex with Ras and Raf.](#)

Li W, Han M, Guan KL.

Genes & Development 2000 Apr; 14(8):895.

Application: IP, Human, HEK 293 cells

- [soc-2 encodes a leucine-rich repeat protein implicated in fibroblast growth factor receptor signaling.](#)

Selfors LM, Schutzman JL, Borland CZ, Stern MJ.

PNAS 1998 Jun; 95(12):6903.

Application: IF, IP-WB, Mouse, Monkey, COS-7, NIH/3T3 cells