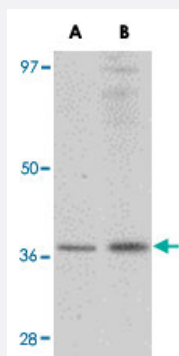


# RSPO1 polyclonal antibody

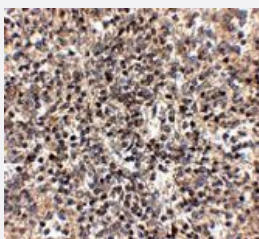
Catalog # PAB16747      Size 100 ug

## Applications



### Western Blot (Tissue lysate)

Western blot analysis of RSPO1 in rat spleen tissue lysate with RSPO1 polyclonal antibody (Cat # PAB16747) at (A) 1 and (B) 2 ug/mL .



### Immunohistochemistry

Immunohistochemistry of RSPO1 in human spleen tissue with RSPO1 polyclonal antibody (Cat # PAB16747) at 2.5 ug/mL .

## Specification

<b>Product Description</b>	Rabbit polyclonal antibody raised against synthetic peptide of RSPO1.
<b>Immunogen</b>	A synthetic peptide corresponding to N-terminus 16 amino acids of human RSPO1.
<b>Host</b>	Rabbit
<b>Reactivity</b>	Human, Mouse, Rat
<b>Form</b>	Liquid
<b>Recommend Usage</b>	Western Blot (1-2 ug/mL) The optimal working dilution should be determined by the end user.

Storage Buffer	In PBS (0.02% sodium azide)
Storage Instruction	Store at 4°C for up to one year. Aliquot to avoid repeated freezing and thawing.
Note	This product contains sodium azide: a POISONOUS AND HAZARDOUS SUBSTANCE which should be handled by trained staff only.

## Applications

- Western Blot (Tissue lysate)

Western blot analysis of RSPO1 in rat spleen tissue lysate with RSPO1 polyclonal antibody (Cat # PAB16747) at (A) 1 and (B) 2 ug/mL .

- Immunohistochemistry

Immunohistochemistry of RSPO1 in human spleen tissue with RSPO1 polyclonal antibody (Cat # PAB16747) at 2.5 ug/mL .

- Enzyme-linked Immunoabsorbent Assay

## Gene Info — RSPO1

Entrez GeneID	<a href="#">284654</a>
Protein Accession#	<a href="#">NP_001033722</a>
Gene Name	RSPO1
Gene Alias	CRISTIN3, FLJ40906, RSPO
Gene Description	R-spondin homolog (Xenopus laevis)
Omim ID	<a href="#">609595</a>
Gene Ontology	<a href="#">Hyperlink</a>
Gene Summary	This gene is a member of the R-spondin family and encodes a secreted activator protein with two cystein-rich, furin-like domains and one thrombospondin type 1 domain. In mice, the protein induces the rapid onset of crypt cell proliferation and increases intestinal epithelial healing, providing a protective effect against chemotherapy-induced adverse effects. [provided by RefSeq]
Other Designations	OTTHUMP00000180612 OTTHUMP00000180613 R-spondin1 roof plate-specific spondin

## Publication Reference

- [Activation of beta-catenin signaling by Rspo1 controls differentiation of the mammalian ovary.](#)

Chassot AA, Ranc F, Gregoire EP, Roepers-Gajadien HL, Taketo MM, Camerino G, de Rooij DG, Schedl A, Chaboissier MC.  
Human Molecular Genetics 2008 May; 17(9):1264.

- [R-spondin1 is essential in sex determination, skin differentiation and malignancy.](#)

Parma P, Radi O, Vidal V, Chaboissier MC, Dellambra E, Valentini S, Guerra L, Schedl A, Camerino G.  
Nature Genetics 2006 Nov; 38(11):1304.

- [R-Spondin proteins: a novel link to beta-catenin activation.](#)

Kim KA, Zhao J, Andarmani S, Kakitani M, Oshima T, Binnerts ME, Abo A, Tomizuka K, Funk WD.  
Cell Cycle (Georgetown, Tex.) 2006 Jan; 5(1):23.

Application: WB-Tr, Human, HeLa cells