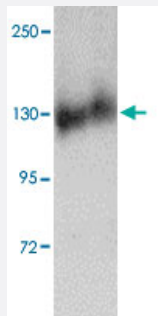


# FKBP15 polyclonal antibody

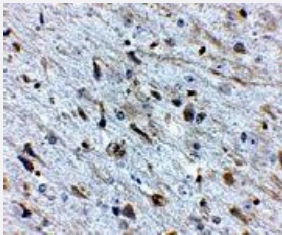
Catalog # PAB16735      Size 100 ug

## Applications



### Western Blot (Cell lysate)

Western blot analysis of FKBP15 in NIH/3T3 cell lysate with FKBP15 polyclonal antibody (Cat # PAB16735) at 1 ug/mL .



### Immunohistochemistry

Immunohistochemistry of FKBP15 in mouse brain tissue with FKBP15 polyclonal antibody (Cat # PAB16735) at 2.5 ug/mL .

## Specification

<b>Product Description</b>	Rabbit polyclonal antibody raised against synthetic peptide of FKBP15.
<b>Immunogen</b>	A synthetic peptide corresponding to N-terminus 15 amino acids of human FKBP15.
<b>Host</b>	Rabbit
<b>Reactivity</b>	Human, Mouse, Rat
<b>Form</b>	Liquid
<b>Recommend Usage</b>	Western Blot (1-2 ug/mL) The optimal working dilution should be determined by the end user.

Storage Buffer	In PBS (0.02% sodium azide)
Storage Instruction	Store at 4°C for three months. For long term storage store at -20°C. Aliquot to avoid repeated freezing and thawing.
Note	This product contains sodium azide: a POISONOUS AND HAZARDOUS SUBSTANCE which should be handled by trained staff only.

## Applications

- Western Blot (Cell lysate)

Western blot analysis of FKBP15 in NIH/3T3 cell lysate with FKBP15 polyclonal antibody (Cat # PAB16735) at 1 ug/mL .

- Immunohistochemistry

Immunohistochemistry of FKBP15 in mouse brain tissue with FKBP15 polyclonal antibody (Cat # PAB16735) at 2.5 ug/mL .

- Enzyme-linked Immunoabsorbent Assay

## Gene Info — FKBP15

Entrez GeneID	<a href="#">23307</a>
Protein Accession#	<a href="#">NP_056073</a>
Gene Name	FKBP15
Gene Alias	FKBP133, KIAA0674
Gene Description	FK506 binding protein 15, 133kDa
Gene Ontology	<a href="#">Hyperlink</a>
Gene Summary	O
Other Designations	FK506-binding protein 133kDa

## Publication Reference

- [WAFL, a new protein involved in regulation of early endocytic transport at the intersection of actin and microtubule dynamics.](#)

Viklund IM, Aspenstrom P, Meas-Yedid V, Zhang B, Kopec J, Agren D, Schneider G, D'Amato M, Olivo-Marin JC, Sansonetti P, Van Nhieu GT, Pettersson S.

Experimental Cell Research 2009 Apr; 315(6):1040.

- [FKBP133: a novel mouse FK506-binding protein homolog alters growth cone morphology.](#)

Nakajima O, Nakamura F, Yamashita N, Tomita Y, Suto F, Okada T, Iwamatsu A, Kondo E, Fujisawa H, Takei K, Goshima Y.

Biochemical and Biophysical Research Communications 2006 Jul; 346(1):140.

Application: IF, IHC-Fr, WB-Tr, Human, Mouse , HEK 293T cells, Mouse E12 DRG

- [Immunophilins in the nervous system.](#)

Snyder SH, Lai MM, Burnett PE.

Neuron 1998 Aug; 21(2):283.