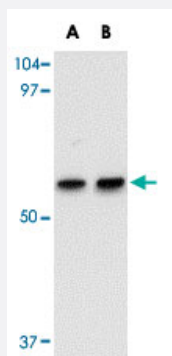


MATN1 polyclonal antibody

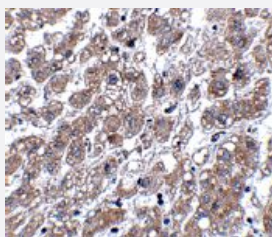
Catalog # PAB16731 Size 100 ug

Applications



Western Blot (Tissue lysate)

Western blot analysis of MATN1 in rat liver tissue lysate with MATN1 polyclonal antibody (Cat # PAB16731) at (A) 1 and (B) 2 ug/mL .



Immunohistochemistry

Immunohistochemistry of MATN1 in human liver tissue with MATN1 polyclonal antibody (Cat # PAB16731) at 5 ug/mL .

Specification

Product Description	Rabbit polyclonal antibody raised against synthetic peptide of MATN1.
Immunogen	A synthetic peptide corresponding to C-terminus 13 amino acids of human MATN1.
Host	Rabbit
Reactivity	Human, Mouse, Rat
Form	Liquid
Recommend Usage	Western Blot (1-2 ug/mL) The optimal working dilution should be determined by the end user.

Storage Buffer	In PBS (0.02% sodium azide)
Storage Instruction	Store at 4°C for three months. For long term storage store at -20°C. Aliquot to avoid repeated freezing and thawing.
Note	This product contains sodium azide: a POISONOUS AND HAZARDOUS SUBSTANCE which should be handled by trained staff only.

Applications

- Western Blot (Tissue lysate)

Western blot analysis of MATN1 in rat liver tissue lysate with MATN1 polyclonal antibody (Cat # PAB16731) at (A) 1 and (B) 2 ug/mL .

- Immunohistochemistry

Immunohistochemistry of MATN1 in human liver tissue with MATN1 polyclonal antibody (Cat # PAB16731) at 5 ug/mL .

- Enzyme-linked Immunoabsorbent Assay

Gene Info — MATN1

Entrez GeneID	4146
Protein Accession#	NP_002370
Gene Name	MATN1
Gene Alias	CMP, CRTM
Gene Description	matrilin 1, cartilage matrix protein
Omim ID	115437
Gene Ontology	Hyperlink
Gene Summary	This gene encodes a member of von Willebrand factor A domain containing protein family. This family of proteins are thought to be involved in the formation of filamentous networks in the extracellular matrices of various tissues. Mutations of this gene have been associated with variety of inherited chondrodysplasias. [provided by RefSeq]
Other Designations	OTTHUMP00000003805 cartilage matrix protein

Publication Reference

- [Enhancing and maintaining chondrogenesis of synovial fibroblasts by cartilage extracellular matrix protein matrilins.](#)
Pei M, Luo J, Chen Q.
Osteoarthritis and Cartilage 2008 Feb; 16(9):1110.
- [Characterization of the matrilin coiled-coil domains reveals seven novel isoforms.](#)
Frank S, Schulthess T, Landwehr R, Lustig A, Mini T, Jeno P, Engel J, Kammerer RA.
The Journal of Biological Chemistry 2002 Mar; 277(21):19071.
- [Assessment of the gene expression profile of differentiated and dedifferentiated human fetal chondrocytes by microarray analysis.](#)
Stokes DG, Liu G, Coimbra IB, Piera-Velazquez S, Crowl RM, Jimenez SA.
Arthritis and Rheumatism 2002 Feb; 46(2):404.

Disease

- [Genetic Predisposition to Disease](#)
- [Osteoarthritis](#)
- [Prognathism](#)
- [Scoliosis](#)