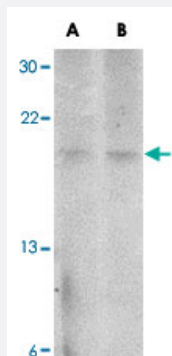


ZBED2 polyclonal antibody

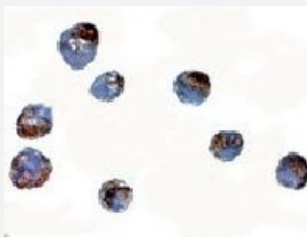
Catalog # PAB16729 Size 100 ug

Applications



Western Blot (Cell lysate)

Western blot analysis of ZBED2 in A-549 cell lysate with ZBED2 polyclonal antibody (Cat # PAB16729) at (A) 1 and (B) 2 ug/mL .



Immunocytochemistry

Immunocytochemistry of ZBED2 in A-549 cells with ZBED2 polyclonal antibody (Cat # PAB16729) at 5 ug/mL .

Specification

Product Description	Rabbit polyclonal antibody raised against synthetic peptide of ZBED2.
Immunogen	A synthetic peptide corresponding to N-terminus 15 amino acids from of human ZBED2.
Host	Rabbit
Reactivity	Human
Form	Liquid
Recommend Usage	Western Blot (1-2 ug/mL) The optimal working dilution should be determined by the end user.

Storage Buffer	In PBS (0.02% sodium azide)
Storage Instruction	Store at 4°C for three months. For long term storage store at -20°C. Aliquot to avoid repeated freezing and thawing.
Note	This product contains sodium azide: a POISONOUS AND HAZARDOUS SUBSTANCE which should be handled by trained staff only.

Applications

- Western Blot (Cell lysate)

Western blot analysis of ZBED2 in A-549 cell lysate with ZBED2 polyclonal antibody (Cat # PAB16729) at (A) 1 and (B) 2 ug/mL .

- Immunocytochemistry

Immunocytochemistry of ZBED2 in A-549 cells with ZBED2 polyclonal antibody (Cat # PAB16729) at 5 ug/mL .

- Enzyme-linked Immunoabsorbent Assay

Gene Info — ZBED2

Entrez GeneID	79413
Protein Accession#	NP_078784
Gene Name	ZBED2
Gene Alias	MGC10796
Gene Description	zinc finger, BED-type containing 2
Gene Ontology	Hyperlink
Gene Summary	O
Other Designations	OTTHUMP00000082693 zinc finger, BED domain containing 2

Publication Reference

- [Transcriptome analysis of human gastric cancer.](#)

Oh JH, Yang JO, Hahn Y, Kim MR, Byun SS, Jeon YJ, Kim JM, Song KS, Noh SM, Kim S, Yoo HS, Kim YS, Kim NS.

Mammalian Genome 2005 Dec; 16(12):942.