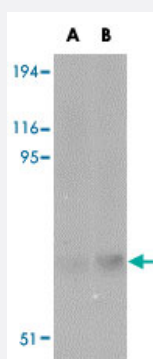


# MATN2 polyclonal antibody

Catalog # PAB16721      Size 100 ug

## Applications



### Western Blot (Tissue lysate)

Western blot analysis of MATN2 in human liver tissue lysate with MATN2 polyclonal antibody (Cat # PAB16721) at (A) 1 and (B) 2 ug/mL .

## Specification

<b>Product Description</b>	Rabbit polyclonal antibody raised against synthetic peptide of MATN2.
<b>Immunogen</b>	A synthetic peptide corresponding to C-terminus 15 amino acids from of human MATN2.
<b>Host</b>	Rabbit
<b>Reactivity</b>	Human, Mouse, Rat
<b>Form</b>	Liquid
<b>Recommend Usage</b>	Western Blot (1-2 ug/mL) The optimal working dilution should be determined by the end user.
<b>Storage Buffer</b>	In PBS (0.02% sodium azide)
<b>Storage Instruction</b>	Store at 4°C for three months. For long term storage store at -20°C. Aliquot to avoid repeated freezing and thawing.
<b>Note</b>	This product contains sodium azide: a POISONOUS AND HAZARDOUS SUBSTANCE which should be handled by trained staff only.

## Applications

- Western Blot (Tissue lysate)

Western blot analysis of MATN2 in human liver tissue lysate with MATN2 polyclonal antibody (Cat # PAB16721) at (A) 1 and (B) 2 ug/mL .

- Enzyme-linked Immunoabsorbent Assay

## Gene Info — MATN2

Entrez GeneID [4147](#)

Protein Accession# [NP\\_085072](#)

Gene Name MATN2

Gene Alias -

Gene Description matrilin 2

Omim ID [602108](#)

Gene Ontology [Hyperlink](#)

**Gene Summary** This gene encodes a member of the von Willebrand factor A domain containing protein family. This family of proteins is thought to be involved in the formation of filamentous networks in the extracellular matrices of various tissues. This protein contains five von Willebrand factor A domains. The specific function of this gene has not yet been determined. Two transcript variants encoding different isoforms have been found for this gene. [provided by RefSeq]

Other Designations -

## Publication Reference

- [Expression of matrilin-2 in liver cirrhosis and hepatocellular carcinoma.](#)

Szabo E, Korpos E, Batmunkh E, Lotz G, Holczbauer A, Kovalszky I, Deak F, Kiss I, Schaff Z, Kiss A.  
Pathology Oncology Research: POR 2008 Mar; 14(1):15.

Application: IHC-P, Human, Human hepatocellular carcinoma, liver cirrhosis

- [Enhancing and maintaining chondrogenesis of synovial fibroblasts by cartilage extracellular matrix protein matrilins.](#)

Pei M, Luo J, Chen Q.

Osteoarthritis and Cartilage 2008 Feb; 16(9):1110.

- [Characterization of the matrilin coiled-coil domains reveals seven novel isoforms.](#)

Frank S, Schulthess T, Landwehr R, Lustig A, Mini T, Jeno P, Engel J, Kammerer RA.

The Journal of Biological Chemistry 2002 Mar; 277(21):19071.

## Disease

- [Cardiovascular Diseases](#)
- [Diabetes Mellitus](#)
- [Edema](#)
- [Genetic Predisposition to Disease](#)
- [Thyroid Neoplasms](#)