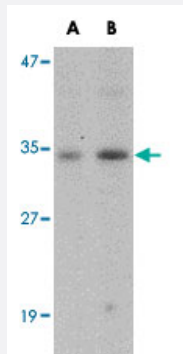


GNPDA1 polyclonal antibody

Catalog # PAB16705 Size 100 ug

Applications



Western Blot (Tissue lysate)

Western blot analysis of GNPDA1 in mouse kidney tissue lysate with GNPDA1 polyclonal antibody (Cat # PAB16705) at (A) 1 and (B) 2 ug/mL .



Immunocytochemistry

Immunocytochemistry of GNPDA1 in 293 cells with GNPDA1 polyclonal antibody (Cat # PAB16705) at 5 ug/mL .

Specification

Product Description	Rabbit polyclonal antibody raised against synthetic peptide of GNPDA1.
Immunogen	A synthetic peptide corresponding to C-terminus 18 amino acids of human GNPDA1.
Host	Rabbit
Reactivity	Human, Mouse, Rat
Form	Liquid
Recommend Usage	Western Blot (1-2 ug/mL) The optimal working dilution should be determined by the end user.

Storage Buffer	In PBS (0.02% sodium azide)
Storage Instruction	Store at 4°C for three months. For long term storage store at -20°C. Aliquot to avoid repeated freezing and thawing.
Note	This product contains sodium azide: a POISONOUS AND HAZARDOUS SUBSTANCE which should be handled by trained staff only.

Applications

- Western Blot (Tissue lysate)

Western blot analysis of GNPDA1 in mouse kidney tissue lysate with GNPDA1 polyclonal antibody (Cat # PAB16705) at (A) 1 and (B) 2 ug/mL .

- Immunocytochemistry

Immunocytochemistry of GNPDA1 in 293 cells with GNPDA1 polyclonal antibody (Cat # PAB16705) at 5 ug/mL .

- Enzyme-linked Immunoabsorbent Assay

Gene Info — GNPDA1

Entrez GeneID	10007
Protein Accession#	AAC05123
Gene Name	GNPDA1
Gene Alias	GNPDA, GNPI, GPI, HLN, KIAA0060
Gene Description	glucosamine-6-phosphate deaminase 1
Omim ID	601798
Gene Ontology	Hyperlink
Other Designations	glucosamine-6-phosphate isomerase oscillin

Publication Reference

- [Two mammalian glucosamine-6-phosphate deaminases: a structural and genetic study.](#)

Arreola R, Valderrama B, Morante ML, Horjales E.

FEBS Letters 2003 Sep; 551(1-3):63.

- [Cloning and functional characterization of GNPI2, a novel human homolog of glucosamine-6-phosphate isomerase/oscillin.](#)

Zhang J, Zhang W, Zou D, Chen G, Wan T, Li N, Cao X.

Journal of Cellular Biochemistry 2003 Apr; 88(5):932.

- [Molecularly cloned mammalian glucosamine-6-phosphate deaminase localizes to transporting epithelium and lacks oscillin activity.](#)

Wolosker H, Kline D, Bian Y, Blackshaw S, Cameron AM, Fralich TJ, Schnaar RL, Snyder SH.

FASEB Journal 1998 Jan; 12(1):91.

Application: IHC-P, WB-Ce, WB-Tr, Human, Mouse, Rat, Brains, Hearts, HEK 293 cells, Kidneys, Livers, Lungs, Skeletal muscles, Small intestines, Sperms, Spleens, Testes

Pathway

- [Amino sugar and nucleotide sugar metabolism](#)
- [Metabolic pathways](#)