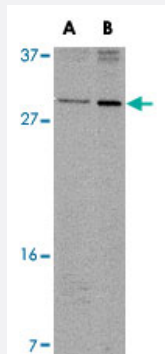


C12orf75 polyclonal antibody

Catalog # PAB16688

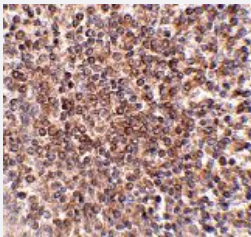
Size 100 ug

Applications



Western Blot (Cell lysate)

Western blot analysis of C12orf75 in 293 cell lysate with C12orf75 polyclonal antibody (Cat # PAB16688) at (A) 2 ug/mL and (B) 4 ug/mL .



Immunohistochemistry

Immunohistochemistry of C12orf75 in human spleen tissue with C12orf75 polyclonal antibody (Cat # PAB16688) at 2.5 ug/mL .

Specification

Product Description

Rabbit polyclonal antibody raised against synthetic peptide of C12orf75.

Immunogen

A synthetic peptide corresponding to C-terminus 7 amino acids of human C12orf75.

Host

Rabbit

Reactivity

Human

Form

Liquid

Recommend Usage

Western Blot (2-4 ug/mL)

The optimal working dilution should be determined by the end user.

Storage Buffer	In PBS (0.02% sodium azide)
Storage Instruction	Store at 4°C for three months. For long term storage store at -20°C. Aliquot to avoid repeated freezing and thawing.
Note	This product contains sodium azide: a POISONOUS AND HAZARDOUS SUBSTANCE which should be handled by trained staff only.

Applications

- Western Blot (Cell lysate)

Western blot analysis of C12orf75 in 293 cell lysate with C12orf75 polyclonal antibody (Cat # PAB16688) at (A) 2 ug/mL and (B) 4 ug/mL .

- Immunohistochemistry

Immunohistochemistry of C12orf75 in human spleen tissue with C12orf75 polyclonal antibody (Cat # PAB16688) at 2.5 ug/mL .

- Enzyme-linked Immunoabsorbent Assay

Gene Info — OCC-1

Entrez GeneID	387882
Protein Accession#	AAH61920
Gene Name	OCC-1
Gene Alias	MGC148100, MGC149157
Gene Description	overexpressed in colon carcinoma-1
Gene Ontology	Hyperlink
Other Designations	-

Publication Reference

- [Cloning of the mRNA of overexpression in colon carcinoma-1: a sequence overexpressed in a subset of colon carcinomas.](#)

Pibouin L, Villaudy J, Ferbus D, Muleris M, Prosperi MT, Remvikos Y, Goubin G.

Cancer Genetics and Cytogenetics 2002 Feb; 133(1):55.

Application: WB, Human, Recombinant protein, TC7 cells