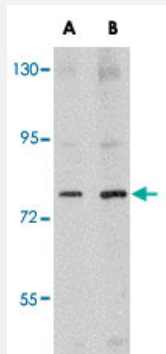


# CRMP1 polyclonal antibody

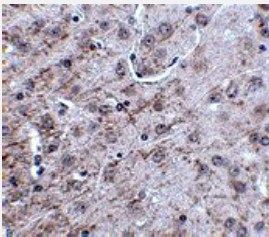
Catalog # PAB16686      Size 100 ug

## Applications



### Western Blot (Tissue lysate)

Western blot analysis of CRMP1 in rat brain tissue lysate with CRMP1 polyclonal antibody (Cat # PAB16686) at (A) 1 and (B) 2 ug/mL .



### Immunohistochemistry

Immunohistochemistry of CRMP1 in mouse brain tissue with CRMP1 polyclonal antibody (Cat # PAB16686) at 2.5 ug/mL .

## Specification

<b>Product Description</b>	Rabbit polyclonal antibody raised against synthetic peptide of CRMP1.
<b>Immunogen</b>	A synthetic peptide corresponding to N-terminus 18 amino acids of human CRMP1.
<b>Host</b>	Rabbit
<b>Reactivity</b>	Human, Mouse, Rat
<b>Form</b>	Liquid
<b>Recommend Usage</b>	Western Blot (1-2 ug/mL) The optimal working dilution should be determined by the end user.

Storage Buffer	In PBS (0.02% sodium azide)
Storage Instruction	Store at 4°C for three months. For long term storage store at -20°C. Aliquot to avoid repeated freezing and thawing.
Note	This product contains sodium azide: a POISONOUS AND HAZARDOUS SUBSTANCE which should be handled by trained staff only.

## Applications

- Western Blot (Tissue lysate)

Western blot analysis of CRMP1 in rat brain tissue lysate with CRMP1 polyclonal antibody (Cat # PAB16686) at (A) 1 and (B) 2 ug/mL .

- Immunohistochemistry

Immunohistochemistry of CRMP1 in mouse brain tissue with CRMP1 polyclonal antibody (Cat # PAB16686) at 2.5 ug/mL .

- Enzyme-linked Immunoabsorbent Assay

## Gene Info — CRMP1

Entrez GeneID	<a href="#">1400</a>
Protein Accession#	<a href="#">AAH07613</a>
Gene Name	CRMP1
Gene Alias	DPYSL1, DRP-1, DRP1
Gene Description	collapsin response mediator protein 1
Omim ID	<a href="#">602462</a>
Gene Ontology	<a href="#">Hyperlink</a>
Gene Summary	This gene encodes a member of a family of cytosolic phosphoproteins expressed exclusively in the nervous system. The encoded protein is thought to be a part of the semaphorin signal transduction pathway implicated in semaphorin-induced growth cone collapse during neural development. Alternative splicing results in multiple transcript variants. [provided by RefSeq]
Other Designations	dihydropyrimidinase related protein-1 dihydropyrimidinase-like 1

## Publication Reference

- [Involvement of collapsin response mediator proteins in the neurite extension induced by neurotrophins in dorsal root ganglion neurons.](#)

Quach TT, Duchemin AM, Rogemond V, Aguera M, Honnorat J, Belin MF, Kolattukudy PE.

Molecular and Cellular Neurosciences 2004 Mar; 25(3):433.

Application: Func, WB, Chicken, Chicken embryos

- [Collapsin response mediator proteins \(CRMPs\): involvement in nervous system development and adult neurodegenerative disorders.](#)

Charrier E, Reibel S, Rogemond V, Aguera M, Thomasset N, Honnorat J.

Molecular Neurobiology 2003 Aug; 28(1):51.

Application: WB-Ti, Human, Human brains

- [Adult neurogenesis produces a large pool of new granule cells in the dentate gyrus.](#)

Cameron HA, McKay RD.

The Journal of Comparative Neurology 2001 Jul; 435(4):406.

## Disease

- [Cleft Lip](#)
- [Cleft Palate](#)
- [Genetic Predisposition to Disease](#)
- [Tobacco Use Disorder](#)