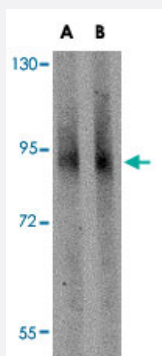


GLE1 polyclonal antibody

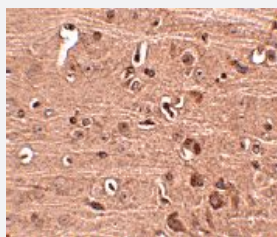
Catalog # PAB16679 Size 100 ug

Applications



Western Blot (Tissue lysate)

Western blot analysis of GLE1 in mouse brain tissue lysate with GLE1 polyclonal antibody (Cat # PAB16679) at (A) 1 and (B) 2 ug/mL .



Immunohistochemistry

Immunohistochemistry of GLE1 in mouse brain tissue with GLE1 polyclonal antibody (Cat # PAB16679) at 2.5 ug/mL .

Specification

Product Description

Rabbit polyclonal antibody raised against synthetic peptide of GLE1.

Immunogen

A synthetic peptide corresponding to C-terminus 15 amino acids of human GLE1.

Host

Rabbit

Reactivity

Human, Mouse, Rat

Form

Liquid

Recommend Usage

Western Blot (1-2 ug/mL)

The optimal working dilution should be determined by the end user.

Storage Buffer	In PBS (0.02% sodium azide)
Storage Instruction	Store at 4°C for three months. For long term storage store at -20°C. Aliquot to avoid repeated freezing and thawing.
Note	This product contains sodium azide: a POISONOUS AND HAZARDOUS SUBSTANCE which should be handled by trained staff only.

Applications

- Western Blot (Tissue lysate)

Western blot analysis of GLE1 in mouse brain tissue lysate with GLE1 polyclonal antibody (Cat # PAB16679) at (A) 1 and (B) 2 ug/mL .

- Immunohistochemistry

Immunohistochemistry of GLE1 in mouse brain tissue with GLE1 polyclonal antibody (Cat # PAB16679) at 2.5 ug/mL .

- Enzyme-linked Immunoabsorbent Assay

Gene Info — GLE1

Entrez GeneID	2733
Protein Accession#	NP_001003722
Gene Name	GLE1
Gene Alias	GLE1L, LCCS, LCCS1, hGLE1
Gene Description	GLE1 RNA export mediator homolog (yeast)
Omim ID	603371
Gene Ontology	Hyperlink
Gene Summary	This gene encodes a predicted 75-kDa polypeptide with high sequence and structure homology to yeast Gle1p, which is nuclear protein with a leucine-rich nuclear export sequence essential for poly(A)+RNA export. Inhibition of human GLE1L by microinjection of antibodies against GLE1L in HeLa cells resulted in inhibition of poly(A)+RNA export. Immunofluorescence studies show that GLE1L is localized at the nuclear pore complexes. This localization suggests that GLE1L may act at a terminal step in the export of mature RNA messages to the cytoplasm. Two alternatively spliced transcript variants encoding different isoforms have been found for this gene. [provided by RefSeq]

Other Designations

GLE1 RNA export mediator homolog|GLE1 RNA export mediator-like|GLE1-like, RNA export mediator|OTTHUMP00000022280|OTTHUMP00000022281

Publication Reference

- [Interaction between the shuttling mRNA export factor Gle1 and the nucleoporin hCG1: a conserved mechanism in the export of Hsp70 mRNA.](#)

Kendirgi F, Rexer DJ, Alcazar-Roman AR, Onishko HM, Wente SR.

Molecular Biology of the Cell 2005 Sep; 16(9):4304.

Application: WB, Human, HeLa cells, Recombinant protein

- [The mRNA export factor human Gle1 interacts with the nuclear pore complex protein Nup155.](#)

Rayala HJ, Kendirgi F, Barry DM, Majerus PW, Wente SR.

Molecular & Cellular Proteomics 2004 Feb; 3(2):145.

Application: IF, WB, Human, HeLa cells

- [The human homologue of Saccharomyces cerevisiae Gle1p is required for poly\(A\)+ RNA export.](#)

Watkins JL, Murphy R, Emtage JL, Wente SR.

PNAS 1998 Jun; 95(12):6779.

Application: IF, WB-Ce, Human, HeLa cells.

Disease

- [Tobacco Use Disorder](#)