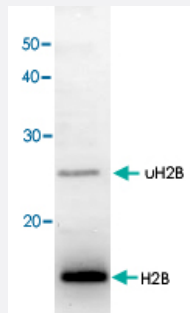


htb1 polyclonal antibody

Catalog # PAB16672 Size 50 uL

Applications



Western Blot (Recombinant protein)

Identification of Histone H2B in crude extract of fussion yeast *S. pombe* with Histone H2B polyclonal antibody (Cat # PAB16672). The 17 kDa and 24~25 kDa band corresponds to the unmodified and the mono-ubiquitinated Histone H2B, respectively.

Specification

Product Description	Rabbit polyclonal antibody raised against synthetic peptide of histone H2B.
Immunogen	A synthetic peptide corresponding to N-terminus of <i>Schizosaccharomyces pombe</i> histone H2B.
Sequence	SAAEKKPASKAPAGKA
Host	Rabbit
Reactivity	<i>S. pombe</i>
Form	Liquid
Recommend Usage	Immunoprecipitation (CHIP assay) Western Blot (1:1000) The optimal working dilution should be determined by the end user.
Storage Buffer	In antiserum (0.05% sodium azide).
Storage Instruction	Store at -20°C. Aliquot to avoid repeated freezing and thawing.
Note	This product contains sodium azide: a POISONOUS AND HAZARDOUS SUBSTANCE which should be handled by trained staff only.

Applications

- ChIP
- Western Blot (Recombinant protein)

Identification of Histone H2B in crude extract of fussion yeast *S. pombe* with Histone H2B polyclonal antibody (Cat # PAB16672). The 17 kDa and 24~25 kDa band corresponds to the unmodified and the mono-ubiquitinated Histone H2B, respectively.

Gene Info — htb1

Entrez GeneID	2539523
Protein Accession#	P04913
Gene Name	htb1
Gene Alias	-
Gene Description	histone H2B (alpha) (PMID 3018512)
Gene Ontology	Hyperlink
Other Designations	-

Publication Reference

- [Histone H2B mutations in inner region affect ubiquitination, centromere function, silencing and chromosome segregation.](#)

Maruyama T, Nakamura T, Hayashi T, Yanagida M.

The EMBO Journal 2006 Jun; 25(11):2420.

Application: ChIP, WB, Yeast, *Schizosaccharomyces pombe*