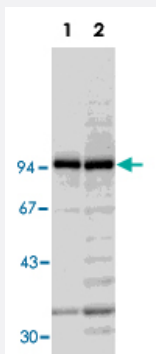


RANBP9 polyclonal antibody

Catalog # PAB16671 Size 100 uL

Applications



Western Blot (Cell lysate)

Western blotting of crude extracts of HeLa (Lane 1) and U-2 OS (Lane 2) cells with RANBP9 polyclonal antibody (Cat # PAB16671).

Specification

Product Description	Rabbit polyclonal antibody raised against partial recombinant RANBP9.
Immunogen	Recombinant protein corresponding to the region from F133 to Y229 of human RANBP9.
Host	Rabbit
Reactivity	Human
Form	Liquid
Recommend Usage	Western Blot (1:2000) The optimal working dilution should be determined by the end user.
Storage Buffer	In antiserum (0.09% sodium azide)
Storage Instruction	Store at 4°C. For long term storage store at -20°C. Aliquot to avoid repeated freezing and thawing.
Note	This product contains sodium azide: a POISONOUS AND HAZARDOUS SUBSTANCE which should be handled by trained staff only.

Applications

- Western Blot (Cell lysate)

Western blotting of crude extracts of HeLa (Lane 1) and U-2 OS (Lane 2) cells with RANBP9 polyclonal antibody (Cat # PAB16671).

- Immunocytochemistry
- Immunoprecipitation

Gene Info — RANBP9

Entrez GeneID	10048
Gene Name	RANBP9
Gene Alias	RANBPM
Gene Description	RAN binding protein 9
Omim ID	603854
Gene Ontology	Hyperlink
Gene Summary	This gene encodes a protein that binds RAN, a small GTP binding protein belonging to the RAS superfamily that is essential for the translocation of RNA and proteins through the nuclear pore complex. The protein encoded by this gene has also been shown to interact with several other proteins, including met proto-oncogene, homeodomain interacting protein kinase 2, androgen receptor, and cyclin-dependent kinase 11. [provided by RefSeq]
Other Designations	OTTHUMP00000017269 novel centrosomal protein RanBPM ran binding protein, centrosomal

Publication Reference

- [Multisite phosphorylation dictates selective E2-E3 pairing as revealed by Ubc8/UBE2H-GID/CTLH assemblies.](#)

Jakub Chrustowicz, Dawafuti Sherpa, Jerry Li, Christine R Langlois, Eleftheria C Papadopoulou, D Tung Vu, Laura A Hehl, Özge Karayel, Viola Beier, Susanne von Gronau, Judith Müller, J Rajan Prabu, Matthias Mann, Gary Kleiger, Arno F Alpi, Brenda A Schulman.

Molecular Cell 2024 Jan; 84(2):293.

Application: WB, Human, HEK293T

- [GID E3 ligase supramolecular chelate assembly configures multipronged ubiquitin targeting of an oligomeric metabolic enzyme.](#)

Dawafuti Sherpa, Jakub Chrustowicz, Shuai Qiao, Christine R Langlois, Laura A Hehl, Karthik Varma Gottemukkala, Fynn M Hansen, Ozge Karayel, Susanne von Gronau, J Rajan Prabu, Matthias Mann, Arno F Alpi, Brenda A Schulman.

Molecular Cell 2021 Jun; 81(11):2445.

Application: WB-Ce, Human, K-562 cells

- [A novel nuclear protein, Twa1, and Muskelin comprise a complex with RanBPM.](#)

Umeda M, Nishitani H, Nishimoto T.

Gene 2003 Jan; 303:47.

Application: IF, IP, WB-Tr, Monkey, COS-7 cells

- [Full-sized RanBPM cDNA encodes a protein possessing a long stretch of proline and glutamine within the N-terminal region, comprising a large protein complex.](#)

Nishitani H, Hirose E, Uchimura Y, Nakamura M, Umeda M, Nishii K, Mori N, Nishimoto T.

Gene 2001 Jul; 272(1-2):25.

Application: WB-Ce, WB-Tr, Dog, Human, Monkey, Mouse, HeLa, KB, Cos-7, BHK21, CHO, WEHI, FM3A cells