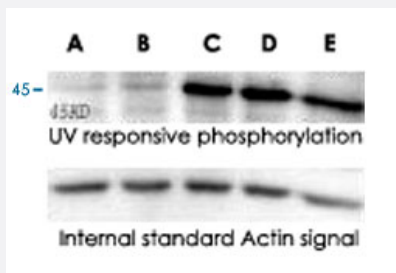


Phosphoserine polyclonal antibody

Catalog # PAB16619 Size 400 uL

Applications



Western Blot (Tissue lysate)

Western blot analysis of mouse spleen lysate (UV response) with Phosphoserine polyclonal antibody (Cat # PAB16619).

Specification

Product Description	Rabbit polyclonal antibody raised against phosphoserine.
Immunogen	Phosphoserine conjugated with KLH.
Host	Rabbit
Specificity	Recognizes proteins phosphorylated on serine residues. Does not cross-react with phosphotyrosine. Species independent of cross reactivity.
Form	Liquid
Recommend Usage	ELISA (0.5-4 ug/mL) Western Blot (2-4 ug/mL) Immunoprecipitation (10 ug/mg lysate) The optimal working dilution should be determined by the end user.
Storage Buffer	In PBS (50% glycerol, 0.09% sodium azide)
Storage Instruction	Store at -20°C. Aliquot to avoid repeated freezing and thawing.
Note	This product contains sodium azide: a POISONOUS AND HAZARDOUS SUBSTANCE which should be handled by trained staff only.

Applications

- Western Blot (Tissue lysate)

Western blot analysis of mouse spleen lysate (UV response) with Phosphoserine polyclonal antibody (Cat # PAB16619).

- Immunohistochemistry

- Immunoprecipitation

- Enzyme-linked Immunoabsorbent Assay