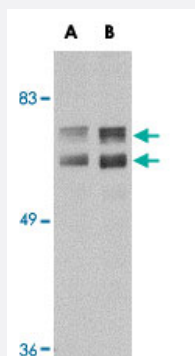


JPH2 polyclonal antibody

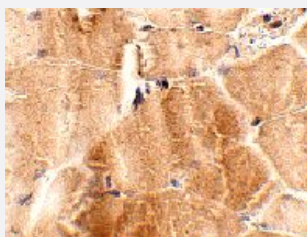
Catalog # PAB16596 Size 100 ug

Applications



Western Blot (Tissue lysate)

Western blot analysis of JPH2 in mouse brain tissue lysate with JPH2 polyclonal antibody (Cat # PAB16596) at (A) 1 and (B) 2 ug/mL .



Immunohistochemistry

Immunohistochemistry of JPH2 in mouse skeletal muscle tissue with JPH2 polyclonal antibody (Cat # PAB16596) at 2.5 ug/mL .

Specification

Product Description	Rabbit polyclonal antibody raised against synthetic peptide of JPH2.
Immunogen	A synthetic peptide corresponding to C-terminus 17 amino acids of human JPH2.
Host	Rabbit
Reactivity	Human, Mouse, Rat
Form	Liquid
Recommend Usage	Western Blot (1-2 ug/mL) The optimal working dilution should be determined by the end user.

Storage Buffer	In PBS (0.02% sodium azide)
Storage Instruction	Store at 4°C for three months. For long term storage store at -20°C. Aliquot to avoid repeated freezing and thawing.
Note	This product contains sodium azide: a POISONOUS AND HAZARDOUS SUBSTANCE which should be handled by trained staff only.

Applications

- Western Blot (Tissue lysate)

Western blot analysis of JPH2 in mouse brain tissue lysate with JPH2 polyclonal antibody (Cat # PAB16596) at (A) 1 and (B) 2 ug/mL .

- Immunohistochemistry

Immunohistochemistry of JPH2 in mouse skeletal muscle tissue with JPH2 polyclonal antibody (Cat # PAB16596) at 2.5 ug/mL .

- Enzyme-linked Immunoabsorbent Assay

Gene Info — JPH2

Entrez GeneID	57158
Protein Accession#	NP_065166
Gene Name	JPH2
Gene Alias	FLJ40969, JP-2, JP2
Gene Description	junctophilin 2
Omim ID	605267
Gene Ontology	Hyperlink
Gene Summary	Junctional complexes between the plasma membrane and endoplasmic/sarcoplasmic reticulum are a common feature of all excitable cell types and mediate cross talk between cell surface and intracellular ion channels. The protein encoded by this gene is a component of junctional complexes and is composed of a C-terminal hydrophobic segment spanning the endoplasmic/sarcoplasmic reticulum membrane and a remaining cytoplasmic domain that shows specific affinity for the plasma membrane. This gene is a member of the junctophilin gene family. Alternative splicing has been observed at this locus and two variants encoding distinct isoforms are described. [provided by RefSeq]
Other Designations	OTTHUMP00000031651 OTTHUMP00000031652

Publication Reference

- [Mutation of junctophilin type 2 associated with hypertrophic cardiomyopathy.](#)

Matsushita Y, Furukawa T, Kasanuki H, Nishibatake M, Kurihara Y, Ikeda A, Kamatani N, Takeshima H, Matsuoka R.
Journal of Human Genetics 2007 May; 52(6):543.

- [Junctophilin-mediated channel crosstalk essential for cerebellar synaptic plasticity.](#)

Kakizawa S, Kishimoto Y, Hashimoto K, Miyazaki T, Furutani K, Shimizu H, Fukaya M, Nishi M, Sakagami H, Ikeda A, Kondo H, Kano M, Watanabe M, Iino M, Takeshima H.
The EMBO Journal 2007 Mar; 26(7):1924.

- [Coexpression of junctophilin type 3 and type 4 in brain.](#)

Nishi M, Sakagami H, Komazaki S, Kondo H, Takeshima H.
Brain Research. Molecular Brain Research 2003 Oct; 118(1-2):102.

Disease

- [Cardiomyopathy](#)
- [Genetic Predisposition to Disease](#)
- [Tobacco Use Disorder](#)