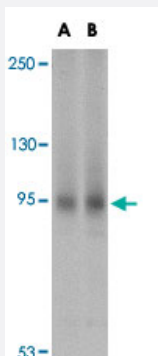


# AAK1 polyclonal antibody

Catalog # PAB16581      Size 100 ug

## Applications



### Western Blot (Cell lysate)

Western blot analysis of AAK1 in A-20 cell lysate with AAK1 polyclonal antibody (Cat # PAB16581) at (A) 1 and (B) 2 ug/mL .



### Immunocytochemistry

Immunocytochemistry of AAK1 in A-20 cells with AAK1 polyclonal antibody (Cat # PAB16581) at 5 ug/mL .

## Specification

<b>Product Description</b>	Rabbit polyclonal antibody raised against synthetic peptide of AAK1.
<b>Immunogen</b>	A synthetic peptide corresponding to N-terminus 20 amino acids of human AAK1.
<b>Host</b>	Rabbit
<b>Reactivity</b>	Human, Mouse, Rat
<b>Form</b>	Liquid
<b>Recommend Usage</b>	Western Blot (1-2 ug/mL) The optimal working dilution should be determined by the end user.

Storage Buffer	In PBS (0.02% sodium azide)
Storage Instruction	Store at 4°C for three months. For long term storage store at -20°C. Aliquot to avoid repeated freezing and thawing.
Note	This product contains sodium azide: a POISONOUS AND HAZARDOUS SUBSTANCE which should be handled by trained staff only.

## Applications

- Western Blot (Cell lysate)

Western blot analysis of AAK1 in A-20 cell lysate with AAK1 polyclonal antibody (Cat # PAB16581) at (A) 1 and (B) 2 ug/mL .

- Immunocytochemistry

Immunocytochemistry of AAK1 in A-20 cells with AAK1 polyclonal antibody (Cat # PAB16581) at 5 ug/mL .

- Enzyme-linked Immunoabsorbent Assay

## Gene Info — AAK1

Entrez GeneID	<a href="#">22848</a>
Protein Accession#	<a href="#">NP_055726</a>
Gene Name	AAK1
Gene Alias	DKFZp686F03202, DKFZp686K16132, FLJ23712, FLJ25931, FLJ31060, FLJ42882, FLJ45252, KIAA1048, MGC138170, MGC164568, MGC164570
Gene Description	AP2 associated kinase 1
Gene Ontology	<a href="#">Hyperlink</a>
Gene Summary	Adaptor-related protein complex 2 (AP-2 complexes) functions during receptor-mediated endocytosis to trigger clathrin assembly, interact with membrane-bound receptors, and recruit accessory factors. This gene encodes a member of the SNF1 subfamily of Ser/Thr protein kinases. The protein interacts with and phosphorylates a subunit of the AP-2 complex, which promotes binding of AP-2 to sorting signals found in membrane-bound receptors and subsequent receptor endocytosis. Its kinase activity is stimulated by clathrin. Alternatively spliced transcript variants have been described, but their biological validity has not been determined. [provided by RefSeq]
Other Designations	adaptor-associated kinase 1

## Publication Reference

- [A novel AAK1 splice variant functions at multiple steps of the endocytic pathway.](#)

Henderson DM, Conner SD.

Molecular Biology of the Cell 2007 May; 18(7):2698.

- [The Ark1/Prk1 family of protein kinases. Regulators of endocytosis and the actin skeleton.](#)

Smythe E, Ayscough KR.

EMBO Reports 2003 Mar; 4(3):246.

Application: WB, Human, Mammalian cells

- [Identification of an adaptor-associated kinase, AAK1, as a regulator of clathrin-mediated endocytosis.](#)

Conner SD, Schmid SL.

The Journal of Cell Biology 2002 Mar; 156(5):921.

Application: IF, WB, Human, Rat, HeLa cells, Rat hippocampal neurons

## Disease

- [Parkinson Disease](#)
- [Tobacco Use Disorder](#)