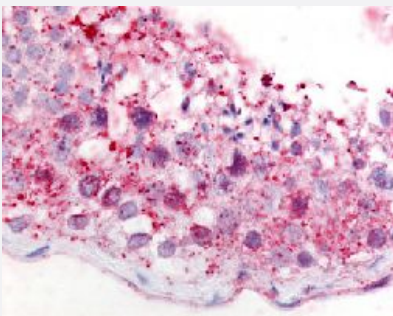


# GPR18 polyclonal antibody

Catalog # PAB16533

Size 50 ug

## Applications



### Immunohistochemistry (Formalin/PFA-fixed paraffin-embedded sections)

Immunohistochemical (Formalin/PFA-fixed paraffin-embedded sections) staining in human testis with GPR18 polyclonal antibody (Cat # PAB16533).

## Specification

|                            |   |
|----------------------------|---|
| <b>Product Description</b> | Rabbit polyclonal antibody raised against synthetic peptide of GPR18.   |
| <b>Immunogen</b>           | A synthetic peptide (conjugated with KLH) corresponding to human GPR18.   |
| <b>Host</b>                | Rabbit  |
| <b>Reactivity</b>          | Human, Mouse  |
| <b>Specificity</b>         | C-terminal domain of human.   |
| <b>Form</b>                | Liquid  |
| <b>Purification</b>        | Immunoaffinity purification   |
| <b>Recommend Usage</b>     | Immunohistochemistry (Formalin/PFA-fixed paraffin-embedded sections) (10 ug/mL)<br>The optimal working dilution should be determined by the end user. |
| <b>Storage Buffer</b>      | In PBS (0.09% sodium azide)   |
| <b>Storage Instruction</b> | Store at 4°C. For long term storage store at -80°C.<br>Aliquot to avoid repeated freezing and thawing.  |

**Note**

This product contains sodium azide: a POISONOUS AND HAZARDOUS SUBSTANCE which should be handled by trained staff only.

## Applications

- Immunohistochemistry (Formalin/PFA-fixed paraffin-embedded sections)

Immunohistochemical (Formalin/PFA-fixed paraffin-embedded sections) staining in human testis with GPR18 polyclonal antibody (Cat # PAB16533).

## Gene Info — GPR18

|                    |                               |
|--------------------|-------------------------------|
| Entrez GeneID      | <a href="#">2841</a>          |
| Protein Accession# | <a href="#">Q14330</a>        |
| Gene Name          | GPR18                         |
| Gene Alias         | -                             |
| Gene Description   | G protein-coupled receptor 18 |
| Omim ID            | <a href="#">602042</a>        |
| Gene Ontology      | <a href="#">Hyperlink</a>     |
| Other Designations | OTTHUMP00000018613            |