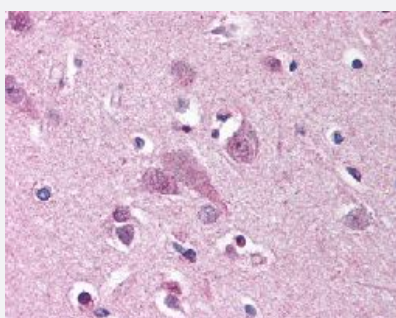


MARK1 polyclonal antibody

Catalog # PAB16531

Size 50 ug

Applications



Immunohistochemistry (Formalin/PFA-fixed paraffin-embedded sections)

Immunohistochemical (Formalin/PFA-fixed paraffin-embedded sections) staining in human brain (cortex) with MARK1 polyclonal antibody (Cat # PAB16531).

Specification

Product Description	Rabbit polyclonal antibody raised against synthetic peptide of MARK1.
Immunogen	A synthetic peptide (conjugated with KLH) corresponding to human MARK1.
Host	Rabbit
Reactivity	Horse, Human, Monkey, Rabbit
Specificity	Internal domain of human.
Form	Liquid
Purification	Immunoaffinity purification
Recommend Usage	Immunohistochemistry (Formalin/PFA-fixed paraffin-embedded sections) (2.5 ug/mL) The optimal working dilution should be determined by the end user.
Storage Buffer	In PBS (0.09% sodium azide)
Storage Instruction	Store at 4°C. For long term storage store at -20°C. Aliquot to avoid repeated freezing and thawing.

Note

This product contains sodium azide: a POISONOUS AND HAZARDOUS SUBSTANCE which should be handled by trained staff only.

Applications

- Immunohistochemistry (Formalin/PFA-fixed paraffin-embedded sections)

Immunohistochemical (Formalin/PFA-fixed paraffin-embedded sections) staining in human brain (cortex) with MARK1 polyclonal antibody (Cat # PAB16531).

Gene Info — MARK1

Entrez GeneID [4139](#)

Protein Accession# [Q9P0L2](#)

Gene Name MARK1

Gene Alias KIAA1477, MARK, MGC126512, MGC126513

Gene Description MAP/microtubule affinity-regulating kinase 1

Omim ID [606511](#)

Gene Ontology [Hyperlink](#)

Other Designations OTTHUMP00000035458

Disease

- [Autistic Disorder](#)
- [Genetic Predisposition to Disease](#)
- [Tobacco Use Disorder](#)