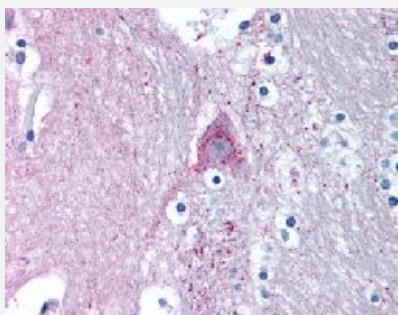


# MARK1 polyclonal antibody

Catalog # PAB16530

Size 50 ug

## Applications



### Immunohistochemistry (Formalin/PFA-fixed paraffin-embedded sections)

Immunohistochemical (Formalin/PFA-fixed paraffin-embedded sections) staining in human brain (caduate) with MARK1 polyclonal antibody (Cat # PAB16530).

## Specification

<b>Product Description</b>	Rabbit polyclonal antibody raised against synthetic peptide of MARK1.
<b>Immunogen</b>	A synthetic peptide (conjugated with KLH) corresponding to human MARK1.
<b>Host</b>	Rabbit
<b>Reactivity</b>	Bovine, Dog, Human, Monkey, Rabbit
<b>Specificity</b>	N-terminal region of human.
<b>Form</b>	Liquid
<b>Purification</b>	Immunoaffinity purification
<b>Recommend Usage</b>	Immunohistochemistry (Formalin/PFA-fixed paraffin-embedded sections) (5 ug/mL) The optimal working dilution should be determined by the end user.
<b>Storage Buffer</b>	In PBS (0.09% sodium azide)
<b>Storage Instruction</b>	Store at 4°C. For long term storage store at -20°C. Aliquot to avoid repeated freezing and thawing.

**Note**

This product contains sodium azide: a POISONOUS AND HAZARDOUS SUBSTANCE which should be handled by trained staff only.

## Applications

- Immunohistochemistry (Formalin/PFA-fixed paraffin-embedded sections)

Immunohistochemical (Formalin/PFA-fixed paraffin-embedded sections) staining in human brain (caduate) with MARK1 polyclonal antibody (Cat # PAB16530).

## Gene Info — MARK1

Entrez GeneID	<a href="#">4139</a>
Protein Accession#	<a href="#">Q9P0L2</a>
Gene Name	MARK1
Gene Alias	KIAA1477, MARK, MGC126512, MGC126513
Gene Description	MAP/microtubule affinity-regulating kinase 1
Omim ID	<a href="#">606511</a>
Gene Ontology	<a href="#">Hyperlink</a>
Other Designations	OTTHUMP00000035458

## Disease

- [Autistic Disorder](#)
- [Genetic Predisposition to Disease](#)
- [Tobacco Use Disorder](#)