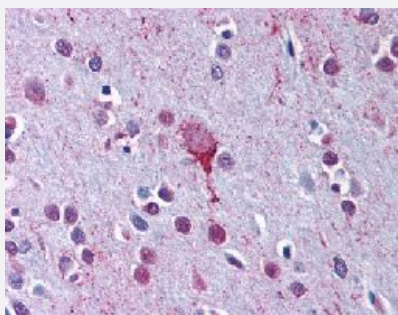


LPAR4 polyclonal antibody

Catalog # PAB16481

Size 50 ug

Applications



Immunohistochemistry (Formalin/PFA-fixed paraffin-embedded sections)

Immunohistochemical (Formalin/PFA-fixed paraffin-embedded sections) staining in human brain (cortex) with LPAR4 polyclonal antibody (Cat # PAB16481).

Specification

Product Description	Rabbit polyclonal antibody raised against synthetic peptide of LPAR4.
Immunogen	A synthetic peptide (conjugated with KLH) corresponding to human LPAR4.
Host	Rabbit
Reactivity	Human, Mouse
Specificity	C-terminal Cytoplasmic domain of human.
Form	Liquid
Purification	Immunoaffinity purification
Recommend Usage	Immunohistochemistry (Formalin/PFA-fixed paraffin-embedded sections) (20 ug/mL) The optimal working dilution should be determined by the end user.
Storage Buffer	In PBS (0.09% sodium azide)
Storage Instruction	Store at 4°C. For long term storage store at -80°C. Aliquot to avoid repeated freezing and thawing.

Note

This product contains sodium azide: a POISONOUS AND HAZARDOUS SUBSTANCE which should be handled by trained staff only.

Applications

- Immunohistochemistry (Formalin/PFA-fixed paraffin-embedded sections)

Immunohistochemical (Formalin/PFA-fixed paraffin-embedded sections) staining in human brain (cortex) with LPAR4 polyclonal antibody (Cat # PAB16481).

Gene Info — LPAR4

Entrez GeneID [2846](#)

Protein Accession# [Q99677](#)

Gene Name LPAR4

Gene Alias GPR23, LPA4, P2RY9, P2Y5-LIKE, P2Y9

Gene Description lysophosphatidic acid receptor 4

Omim ID [300086](#)

Gene Ontology [Hyperlink](#)

Gene Summary This gene encodes a member of the lysophosphatidic acid receptor family. It may also be related to the P2Y receptors, a family of receptors that bind purine and pyrimidine nucleotides and are coupled to G proteins. The encoded protein may play a role in monocytic differentiation. [provided by RefSeq]

Other Designations G protein-coupled receptor 23

Pathway

- [Neuroactive ligand-receptor interaction](#)