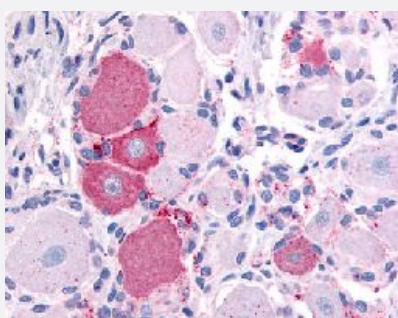


TRPV2 polyclonal antibody

Catalog # PAB16478

Size 50 ug

Applications



Immunohistochemistry (Formalin/PFA-fixed paraffin-embedded sections)

Immunohistochemical (Formalin/PFA-fixed paraffin-embedded sections) staining in human dorsal root ganglion with TRPV2 polyclonal antibody (Cat # PAB16478).

Specification

Product Description	Rabbit polyclonal antibody raised against synthetic peptide of TRPV2.
Immunogen	A synthetic peptide (conjugated with KLH) corresponding to human TRPV2.
Host	Rabbit
Reactivity	Horse, Human, Monkey, Mouse, Pig
Specificity	N-terminal domain of human.
Form	Liquid
Purification	Immunoaffinity purification
Recommend Usage	Immunohistochemistry (Formalin/PFA-fixed paraffin-embedded sections) (10 ug/mL) The optimal working dilution should be determined by the end user.
Storage Buffer	In PBS (0.09% sodium azide)
Storage Instruction	Store at 4°C. For long term storage store at -80°C. Aliquot to avoid repeated freezing and thawing.

Note

This product contains sodium azide: a POISONOUS AND HAZARDOUS SUBSTANCE which should be handled by trained staff only.

Applications

- Immunohistochemistry (Formalin/PFA-fixed paraffin-embedded sections)

Immunohistochemical (Formalin/PFA-fixed paraffin-embedded sections) staining in human dorsal root ganglion with TRPV2 polyclonal antibody (Cat # PAB16478).

Gene Info — TRPV2

Entrez GeneID	51393
---------------	-----------------------

Protein Accession#	Q9Y5S1
--------------------	------------------------

Gene Name	TRPV2
-----------	-------

Gene Alias	MGC12549, VRL, VRL-1, VRL1
------------	----------------------------

Gene Description	transient receptor potential cation channel, subfamily V, member 2
------------------	--

Omim ID	606676
---------	------------------------

Gene Ontology	Hyperlink
---------------	---------------------------

Gene Summary	This gene encodes an ion channel that is activated by high temperatures above 52 degrees Celsius. The protein may be involved in transduction of high-temperature heat responses in sensory ganglia. It is thought that in other tissues the channel may be activated by stimuli other than heat. [provided by RefSeq]
--------------	--

Other Designations	vanilloid receptor-like protein 1
--------------------	-----------------------------------