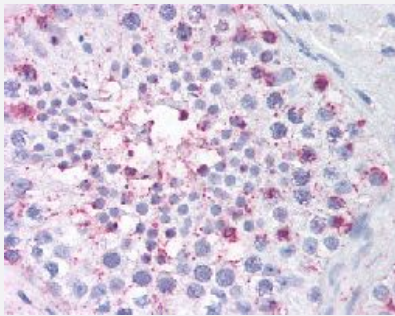


# USP2 polyclonal antibody

Catalog # PAB16468

Size 50 ug

## Applications



### Immunohistochemistry (Formalin/PFA-fixed paraffin-embedded sections)

Immunohistochemical (Formalin/PFA-fixed paraffin-embedded sections) staining in human testis with USP2 polyclonal antibody (Cat # PAB16468).

## Specification

<b>Product Description</b>	Rabbit polyclonal antibody raised against synthetic peptide of USP2.
<b>Immunogen</b>	A synthetic peptide (conjugated with KLH) corresponding to human USP2.
<b>Host</b>	Rabbit
<b>Reactivity</b>	Human, Monkey, Mouse, Rat
<b>Specificity</b>	Internal domain of human.
<b>Form</b>	Liquid
<b>Purification</b>	Immunoaffinity purification
<b>Recommend Usage</b>	Immunohistochemistry (Formalin/PFA-fixed paraffin-embedded sections) (1.25-2.5 ug/mL) The optimal working dilution should be determined by the end user.
<b>Storage Buffer</b>	In PBS (0.09% sodium azide)
<b>Storage Instruction</b>	Store at 4°C. For long term storage store at -80°C. Aliquot to avoid repeated freezing and thawing.

**Note**

This product contains sodium azide: a POISONOUS AND HAZARDOUS SUBSTANCE which should be handled by trained staff only.

## Applications

- Immunohistochemistry (Formalin/PFA-fixed paraffin-embedded sections)

Immunohistochemical (Formalin/PFA-fixed paraffin-embedded sections) staining in human testis with USP2 polyclonal antibody (Cat # PAB16468).

## Gene Info — USP2

**Entrez GeneID** [9099](#)

**Protein Accession#** [O75604](#)

**Gene Name** USP2

**Gene Alias** UBP41, USP9

**Gene Description** ubiquitin specific peptidase 2

**Omim ID** [604725](#)

**Gene Ontology** [Hyperlink](#)

**Gene Summary** Ubiquitin (MIM 191339), a highly conserved protein involved in the regulation of intracellular protein breakdown, cell cycle regulation, and stress response, is released from degraded proteins by disassembly of the polyubiquitin chains. The disassembly process is mediated by ubiquitin-specific proteases (USPs). Also see USP1 (MIM 603478).[supplied by OMIM]

**Other Designations** ubiquitin carboxyl-terminal hydrolase 2 variant 1|ubiquitin carboxyl-terminal hydrolase 2 variant 2|ubiquitin specific protease 12|ubiquitin specific protease 2|ubiquitin specific protease 9

## Disease

- [Genetic Predisposition to Disease](#)
- [Obesity](#)