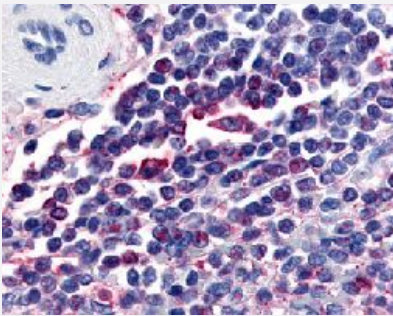


ATRN polyclonal antibody

Catalog # PAB16466

Size 50 ug

Applications



Immunohistochemistry (Formalin/PFA-fixed paraffin-embedded sections)

Immunohistochemical (Formalin/PFA-fixed paraffin-embedded sections) staining in human spleen with ATRN polyclonal antibody (Cat # PAB16466).

Specification

Product Description	Rabbit polyclonal antibody raised against synthetic peptide of ATRN.
Immunogen	A synthetic peptide (conjugated with KLH) corresponding to human ATRN.
Host	Rabbit
Reactivity	Human
Specificity	Internal domain of human.
Form	Liquid
Purification	Immunoaffinity purification
Recommend Usage	Immunohistochemistry (Formalin/PFA-fixed paraffin-embedded sections) (20 ug/mL) The optimal working dilution should be determined by the end user.
Storage Buffer	In PBS (0.09% sodium azide)
Storage Instruction	Store at 4°C. For long term storage store at -80°C. Aliquot to avoid repeated freezing and thawing.

Note

This product contains sodium azide: a POISONOUS AND HAZARDOUS SUBSTANCE which should be handled by trained staff only.

Applications

- Immunohistochemistry (Formalin/PFA-fixed paraffin-embedded sections)

Immunohistochemical (Formalin/PFA-fixed paraffin-embedded sections) staining in human spleen with ATRN polyclonal antibody (Cat # PAB16466).

Gene Info — ATRN

Entrez GeneID [8455](#)

Protein Accession# [O75882](#)

Gene Name ATRN

Gene Alias DPPT-L, KIAA0548, MGC126754, MGCA

Gene Description attractin

Omim ID [603130](#)

Gene Ontology [Hyperlink](#)

Gene Summary Multiple transcript variants encoding different isoforms exist for this gene. One of the isoforms is a membrane-bound protein with sequence similarity to the mouse mahogany protein, a receptor involved in controlling obesity. The other isoform is a secreted protein involved in the initial immune cell clustering during inflammatory responses that may regulate the chemotactic activity of chemokines. [provided by RefSeq]

Other Designations OTTHUMP00000030102|OTTHUMP00000030103|attractin-2|mahogany protein

Disease

- [Carcinoma](#)
- [Genetic Predisposition to Disease](#)
- [Malignant melanoma](#)
- [Melanoma](#)
- [Skin Neoplasms](#)

- [Tobacco Use Disorder](#)