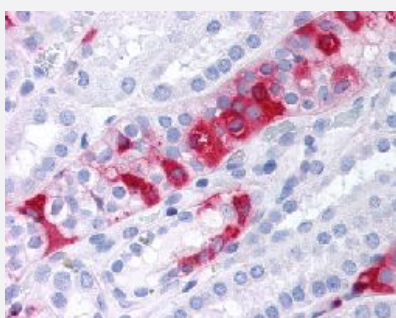


SGK3 polyclonal antibody

Catalog # PAB16432

Size 50 ug

Applications



Immunohistochemistry (Formalin/PFA-fixed paraffin-embedded sections)

Immunohistochemical (Formalin/PFA-fixed paraffin-embedded sections) staining in human kidney with SGK3 polyclonal antibody (Cat # PAB16432).

Specification

Product Description	Rabbit polyclonal antibody raised against synthetic peptide of SGK3.
Immunogen	A synthetic peptide (conjugated with KLH) corresponding to human SGK3.
Host	Rabbit
Reactivity	Human, Mouse
Specificity	C-terminal domain of human.
Form	Liquid
Purification	Immunoaffinity purification
Recommend Usage	Immunohistochemistry (Formalin/PFA-fixed paraffin-embedded sections) (5 ug/mL) The optimal working dilution should be determined by the end user.
Storage Buffer	In PBS (0.09% sodium azide)
Storage Instruction	Store at 4°C. For long term storage store at -80°C. Aliquot to avoid repeated freezing and thawing.

Note

This product contains sodium azide: a POISONOUS AND HAZARDOUS SUBSTANCE which should be handled by trained staff only.

Applications

- Immunohistochemistry (Formalin/PFA-fixed paraffin-embedded sections)

Immunohistochemical (Formalin/PFA-fixed paraffin-embedded sections) staining in human kidney with SGK3 polyclonal antibody (Cat # PAB16432).

Gene Info — SGK3

Entrez GeneID [23678](#)

Protein Accession# [Q96BR1](#)

Gene Name SGK3

Gene Alias CISK, DKFZp781N0293, SGK2, SGKL

Gene Description serum/glucocorticoid regulated kinase family, member 3

Omim ID [607591](#)

Gene Ontology [Hyperlink](#)

Gene Summary This gene is a member of the Ser/Thr protein kinase family and encodes a phosphoprotein with a PX (phox homology) domain. The protein phosphorylates several target proteins and has a role in neutral amino acid transport and activation of potassium and chloride channels. Alternate transcriptional splice variants, encoding different isoforms, have been characterized. [provided by RefSeq]

Other Designations cytokine-independent survival kinase|serum/glucocorticoid regulated kinase 3|serum/glucocorticoid regulated kinase-like