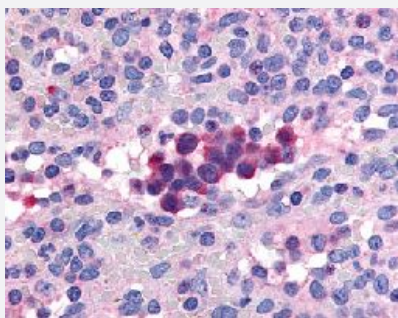


PDE9A polyclonal antibody

Catalog # PAB16427 Size 50 ug

Applications



Immunohistochemistry (Formalin/PFA-fixed paraffin-embedded sections)

Immunohistochemical (Formalin/PFA-fixed paraffin-embedded sections) staining in human spleen with PDE9A polyclonal antibody (Cat # PAB16427).

Specification

Product Description	Rabbit polyclonal antibody raised against synthetic peptide of PDE9A.
Immunogen	A synthetic peptide (conjugated with KLH) corresponding to human PDE9A.
Host	Rabbit
Reactivity	Dog, Human, Monkey, Mouse, Rat
Specificity	Internal domain of human.
Form	Liquid
Purification	Immunoaffinity purification
Recommend Usage	The optimal working dilution should be determined by the end user.
Storage Buffer	In PBS (0.09% sodium azide)
Storage Instruction	Store at 4°C. For long term storage store at -80°C. Aliquot to avoid repeated freezing and thawing.
Note	This product contains sodium azide: a POISONOUS AND HAZARDOUS SUBSTANCE which should be handled by trained staff only.

Applications

- Immunohistochemistry (Formalin/PFA-fixed paraffin-embedded sections)

Immunohistochemical (Formalin/PFA-fixed paraffin-embedded sections) staining in human spleen with PDE9A polyclonal antibody (Cat # PAB16427).

Gene Info — PDE9A

Entrez GeneID	5152
Protein Accession#	O76083
Gene Name	PDE9A
Gene Alias	HSPDE9A2
Gene Description	phosphodiesterase 9A
Omim ID	602973
Gene Ontology	Hyperlink
Gene Summary	The protein encoded by this gene catalyzes the hydrolysis of cAMP and cGMP to their corresponding monophosphates. The encoded protein plays a role in signal transduction by regulating the intracellular concentration of these cyclic nucleotides. Multiple transcript variants encoding several different isoforms have been found for this gene. [provided by RefSeq]
Other Designations	CGMP-specific 3',5'-cyclic phosphodiesterase type 9 OTTHUMP00000109390 OTTHUMP00000109391 OTTHUMP00000109393 OTTHUMP00000109394 OTTHUMP00000109397 OTTHUMP00000109399 OTTHUMP00000109400 phosphodiesterase PDE9A21

Pathway

- [Purine metabolism](#)

Disease

- [Depressive Disorder](#)
- [Genetic Predisposition to Disease](#)

- [Psychiatric Status Rating Scales](#)
- [Tobacco Use Disorder](#)