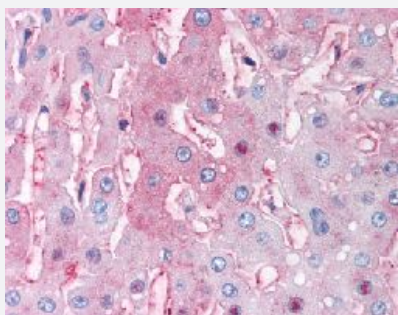


DUSP26 polyclonal antibody

Catalog # PAB16414

Size 50 ug

Applications



Immunohistochemistry (Formalin/PFA-fixed paraffin-embedded sections)

Immunohistochemical (Formalin/PFA-fixed paraffin-embedded sections) staining in human liver with DUSP26 polyclonal antibody (Cat # PAB16414).

Specification

Product Description	Rabbit polyclonal antibody raised against synthetic peptide of DUSP26.
Immunogen	A synthetic peptide (conjugated with KLH) corresponding to human DUSP26.
Host	Rabbit
Reactivity	Hamster, Horse, Human, Mouse
Specificity	Internal domain of human.
Form	Liquid
Purification	Immunoaffinity purification
Recommend Usage	Immunohistochemistry (Formalin/PFA-fixed paraffin-embedded sections) (6 ug/mL) The optimal working dilution should be determined by the end user.
Storage Buffer	In PBS (0.09% sodium azide)
Storage Instruction	Store at 4°C. For long term storage store at -80°C. Aliquot to avoid repeated freezing and thawing.

Note

This product contains sodium azide: a POISONOUS AND HAZARDOUS SUBSTANCE which should be handled by trained staff only.

Applications

- Immunohistochemistry (Formalin/PFA-fixed paraffin-embedded sections)

Immunohistochemical (Formalin/PFA-fixed paraffin-embedded sections) staining in human liver with DUSP26 polyclonal antibody (Cat # PAB16414).

Gene Info — DUSP26

Entrez GeneID [78986](#)

Protein Accession# [Q9BV47](#)

Gene Name DUSP26

Gene Alias DUSP24, LDP-4, MGC1136, MGC2627, MKP8, NATA1, SKRP3

Gene Description dual specificity phosphatase 26 (putative)

Gene Ontology [Hyperlink](#)

Other Designations Novel amplified gene in thyroid anaplastic cancer|dual specificity phosphatase 26|dual-specificity phosphatase SKRP3|low-molecular-mass dual-specificity phosphatase 4|mitogen-activated protein kinase phosphatase 8