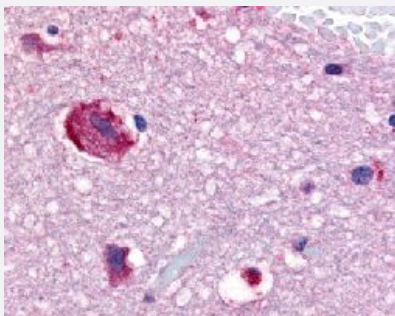


GPR61 polyclonal antibody

Catalog # PAB16411

Size 50 ug

Applications



Immunohistochemistry (Formalin/PFA-fixed paraffin-embedded sections)

Immunohistochemical (Formalin/PFA-fixed paraffin-embedded sections) staining in human brain (caudate) with GPR61 polyclonal antibody (Cat # PAB16411).

Specification

Product Description	Rabbit polyclonal antibody raised against synthetic peptide of GPR61.
Immunogen	A synthetic peptide (conjugated with KLH) corresponding to human GPR61.
Host	Rabbit
Reactivity	Bovine, Horse, Human, Monkey, Mouse, Pig, Rat
Specificity	2nd Cytoplasmic domain of human.
Form	Liquid
Purification	Immunoaffinity purification
Recommend Usage	Immunohistochemistry (Formalin/PFA-fixed paraffin-embedded sections) (20 ug/mL) The optimal working dilution should be determined by the end user.
Storage Buffer	In PBS (0.09% sodium azide)
Storage Instruction	Store at 4°C. For long term storage store at -80°C. Aliquot to avoid repeated freezing and thawing.

Note

This product contains sodium azide: a POISONOUS AND HAZARDOUS SUBSTANCE which should be handled by trained staff only.

Applications

- Immunohistochemistry (Formalin/PFA-fixed paraffin-embedded sections)

Immunohistochemical (Formalin/PFA-fixed paraffin-embedded sections) staining in human brain (caudate) with GPR61 polyclonal antibody (Cat # PAB16411).

Gene Info — GPR61

Entrez GeneID [83873](#)

Protein Accession# [Q9BZJ8](#)

Gene Name GPR61

Gene Alias BALGR, GPCR3

Gene Description G protein-coupled receptor 61

Omim ID [606916](#)

Gene Ontology [Hyperlink](#)

Gene Summary This gene belongs to the G-protein coupled receptor 1 family. G protein-coupled receptors contain 7 transmembrane domains and transduce extracellular signals through heterotrimeric G proteins. The protein encoded by this gene is most closely related to biogenic amine receptors. [provided by RefSeq]

Other Designations OTTHUMP00000013345|biogenic amine receptor-like GPCR