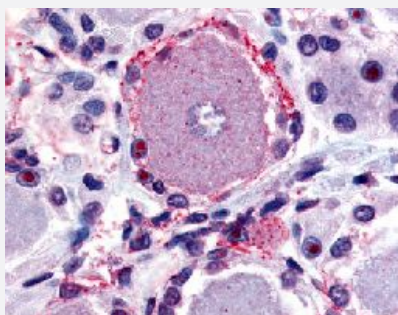


MRGPRX2 polyclonal antibody

Catalog # PAB16405

Size 50 ug

Applications



Immunohistochemistry (Formalin/PFA-fixed paraffin-embedded sections)

Immunohistochemical (Formalin/PFA-fixed paraffin-embedded sections) staining in human spinal cord (DRG) with MRGPRX2 polyclonal antibody (Cat # PAB16405).

Specification

Product Description	Rabbit polyclonal antibody raised against synthetic peptide of MRGPRX2.
Immunogen	A synthetic peptide (conjugated with KLH) corresponding to human MRGPRX2.
Host	Rabbit
Reactivity	Human
Specificity	3rd extracellular domain of human.
Form	Liquid
Purification	Immunoaffinity purification
Recommend Usage	Immunohistochemistry (Formalin/PFA-fixed paraffin-embedded sections) (20 ug/mL) The optimal working dilution should be determined by the end user.
Storage Buffer	In PBS (0.09% sodium azide)
Storage Instruction	Store at 4°C. For long term storage store at -80°C. Aliquot to avoid repeated freezing and thawing.

Note

This product contains sodium azide: a POISONOUS AND HAZARDOUS SUBSTANCE which should be handled by trained staff only.

Applications

- Immunohistochemistry (Formalin/PFA-fixed paraffin-embedded sections)

Immunohistochemical (Formalin/PFA-fixed paraffin-embedded sections) staining in human spinal cord (DRG) with MRGPRX2 polyclonal antibody (Cat # PAB16405).

Gene Info — MRGPRX2

Entrez GeneID [117194](#)

Protein Accession# [Q96LB1](#)

Gene Name MRGPRX2

Gene Alias MRGX2

Gene Description MAS-related GPR, member X2

Omim ID [607228](#)

Gene Ontology [Hyperlink](#)

Gene Summary O

Other Designations G protein-coupled receptor MRGX2