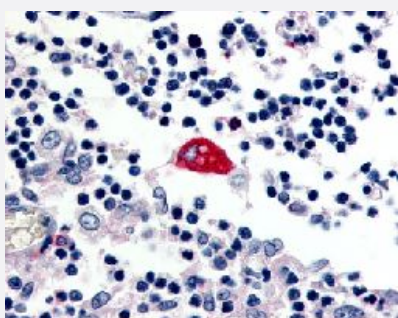


# EMR3 polyclonal antibody

Catalog # PAB16404

Size 50 ug

## Applications



### Immunohistochemistry (Formalin/PFA-fixed paraffin-embedded sections)

Immunohistochemical (Formalin/PFA-fixed paraffin-embedded sections) staining in human macrophages with EMR3 polyclonal antibody (Cat # PAB16404).

## Specification

<b>Product Description</b>	Rabbit polyclonal antibody raised against synthetic peptide of EMR3.
<b>Immunogen</b>	A synthetic peptide (conjugated with KLH) corresponding to human EMR3.
<b>Host</b>	Rabbit
<b>Reactivity</b>	Human, Monkey
<b>Specificity</b>	C-terminal Cytoplasmic domain of human.
<b>Form</b>	Liquid
<b>Purification</b>	Immunoaffinity purification
<b>Recommend Usage</b>	Immunohistochemistry (Formalin/PFA-fixed paraffin-embedded sections) (2.5 ug/mL) The optimal working dilution should be determined by the end user.
<b>Storage Buffer</b>	In PBS (0.09% sodium azide)
<b>Storage Instruction</b>	Store at 4°C. For long term storage store at -80°C. Aliquot to avoid repeated freezing and thawing.

**Note**

This product contains sodium azide: a POISONOUS AND HAZARDOUS SUBSTANCE which should be handled by trained staff only.

## Applications

- Immunohistochemistry (Formalin/PFA-fixed paraffin-embedded sections)

Immunohistochemical (Formalin/PFA-fixed paraffin-embedded sections) staining in human macrophages with EMR3 polyclonal antibody (Cat # PAB16404).

## Gene Info — EMR3

**Entrez GeneID** [84658](#)

**Protein Accession#** [Q9BY15](#)

**Gene Name** EMR3

**Gene Alias** -

**Gene Description** egf-like module containing, mucin-like, hormone receptor-like 3

**Omim ID** [606101](#)

**Gene Ontology** [Hyperlink](#)

**Gene Summary** This gene encodes a member of the class B seven-span transmembrane (TM7) receptor family expressed predominantly by cells of the immune system. Family members are characterized by an extended extracellular region with a variable number of N-terminal epidermal growth factor (EGF)-like domains coupled to a TM7 domain via a mucin-like spacer domain. This gene is closely linked to the gene encoding egf-like molecule containing mucin-like hormone receptor 2 on chromosome 19. This protein may play a role in myeloid-myeloid interactions during immune and inflammatory responses. [provided by RefSeq]

**Other Designations** egf-like module-containing mucin-like receptor 3