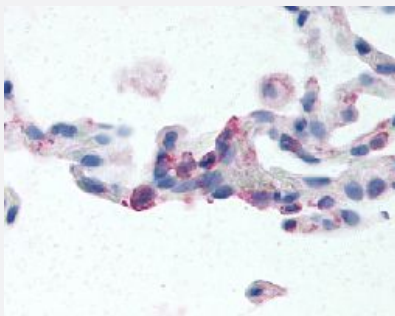


# EMR2 polyclonal antibody

Catalog # PAB16397

Size 50 ug

## Applications



### Immunohistochemistry (Formalin/PFA-fixed paraffin-embedded sections)

Immunohistochemical (Formalin/PFA-fixed paraffin-embedded sections) staining in human lung (neutrophils) with EMR2 polyclonal antibody (Cat # PAB16397).

## Specification

<b>Product Description</b>	Rabbit polyclonal antibody raised against synthetic peptide of EMR2.
<b>Immunogen</b>	A synthetic peptide (conjugated with KLH) corresponding to human EMR2.
<b>Host</b>	Rabbit
<b>Reactivity</b>	Human
<b>Specificity</b>	N-terminal extracellular domain of human.
<b>Form</b>	Liquid
<b>Purification</b>	Immunoaffinity purification
<b>Recommend Usage</b>	Immunohistochemistry (Formalin/PFA-fixed paraffin-embedded sections) (12 ug/mL) The optimal working dilution should be determined by the end user.
<b>Storage Buffer</b>	In PBS (0.09% sodium azide)
<b>Storage Instruction</b>	Store at 4°C. For long term storage store at -80°C. Aliquot to avoid repeated freezing and thawing.

**Note**

This product contains sodium azide: a POISONOUS AND HAZARDOUS SUBSTANCE which should be handled by trained staff only.

## Applications

- Immunohistochemistry (Formalin/PFA-fixed paraffin-embedded sections)

Immunohistochemical (Formalin/PFA-fixed paraffin-embedded sections) staining in human lung (neutrophils) with EMR2 polyclonal antibody (Cat # PAB16397).

## Gene Info — EMR2

**Entrez GeneID** [30817](#)

**Protein Accession#** [Q9UHX3](#)

**Gene Name** EMR2

**Gene Alias** CD312, DKFZp781B135

**Gene Description** egf-like module containing, mucin-like, hormone receptor-like 2

**Omim ID** [606100](#)

**Gene Ontology** [Hyperlink](#)

**Gene Summary** This gene encodes a member of the class B seven-span transmembrane (TM7) receptor family expressed predominantly by cells of the immune system. Family members are characterized by an extended extracellular region with a variable number of N-terminal epidermal growth factor (EGF)-like domains coupled to a TM7 domain via a mucin-like spacer domain. This gene is closely linked to the gene encoding egf-like molecule containing mucin-like hormone receptor 3 on chromosome 19. This protein does not interact with the ligand decay accelerating factor for complement, unlike the related CD97 antigen, and indicates that these very closely related proteins likely have non-redundant functions. This gene results in multiple transcripts encoding distinct isoforms. [provided by RefSeq]

**Other Designations** egf-like module containing, mucin-like, hormone receptor-like sequence 2