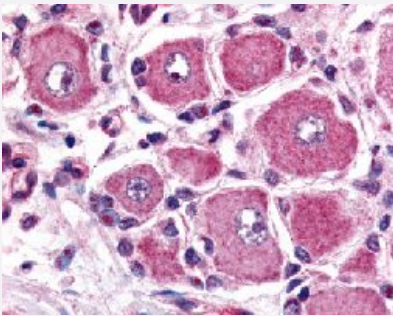


GPR149 polyclonal antibody

Catalog # PAB16386 Size 50 ug

Applications



Immunohistochemistry (Formalin/PFA-fixed paraffin-embedded sections)

Immunohistochemical (Formalin/PFA-fixed paraffin-embedded sections) staining in human spinal cord (dorsal root ganglion) with GPR149 polyclonal antibody (Cat # PAB16386).

Specification

Product Description	Rabbit polyclonal antibody raised against synthetic peptide of GPR149.
Immunogen	A synthetic peptide corresponding to C-terminus of human GPR149.
Host	Rabbit
Reactivity	Human, Monkey
Specificity	Human GPR149.
Form	Liquid
Purification	Immunoaffinity purification
Recommend Usage	Immunohistochemistry (Formalin/PFA-fixed paraffin-embedded sections) (2.5-5 ug/mL) The optimal working dilution should be determined by the end user.
Storage Buffer	In PBS (0.09% sodium azide).
Storage Instruction	Store at 4°C for up to 1 month. For long term storage store at -20°C or -80°C. Aliquot to avoid repeated freezing and thawing.

Note

This product contains sodium azide: a POISONOUS AND HAZARDOUS SUBSTANCE which should be handled by trained staff only.

Applications

- Immunohistochemistry (Formalin/PFA-fixed paraffin-embedded sections)

Immunohistochemical (Formalin/PFA-fixed paraffin-embedded sections) staining in human spinal cord (dorsal root ganglion) with GPR149 polyclonal antibody (Cat # PAB16386).

Gene Info — GPR149

Entrez GeneID [344758](#)

Protein Accession# [Q86SP6](#)

Gene Name GPR149

Gene Alias IEDA, PGR10

Gene Description G protein-coupled receptor 149

Gene Ontology [Hyperlink](#)

Other Designations G protein-coupled receptor PGR10

Disease

- [Tobacco Use Disorder](#)