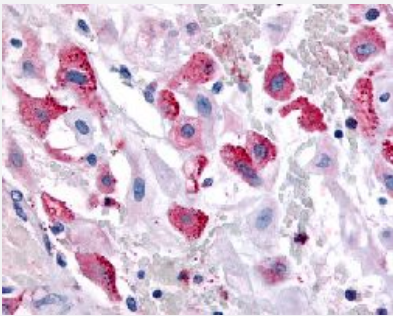


BRS3 polyclonal antibody

Catalog # PAB16381

Size 50 ug

Applications



Immunohistochemistry (Formalin/PFA-fixed paraffin-embedded sections)

Immunohistochemical (Formalin/PFA-fixed paraffin-embedded sections) staining in human pregnant uterus with BRS3 polyclonal antibody (Cat # PAB16381).

Specification

| | |
|----------------------------|---|
| Product Description | Rabbit polyclonal antibody raised against synthetic peptide of BRS3. |
| Immunogen | A synthetic peptide (conjugated with KLH) corresponding to human BRS3. |
| Host | Rabbit |
| Reactivity | Bovine, Dog, Guinea pig, Hamster, Horse, Human, Monkey, Mouse, Rabbit, Rat, Sheep |
| Specificity | 1st Cytoplasmic domain of human. |
| Form | Liquid |
| Purification | Immunoaffinity purification |
| Recommend Usage | Immunohistochemistry (Formalin/PFA-fixed paraffin-embedded sections) (10 ug/mL) The optimal working dilution should be determined by the end user. |
| Storage Buffer | In PBS (0.09% sodium azide) |
| Storage Instruction | Store at 4°C. For long term storage store at -80°C. Aliquot to avoid repeated freezing and thawing. |

Note

This product contains sodium azide: a POISONOUS AND HAZARDOUS SUBSTANCE which should be handled by trained staff only.

Applications

- Immunohistochemistry (Formalin/PFA-fixed paraffin-embedded sections)

Immunohistochemical (Formalin/PFA-fixed paraffin-embedded sections) staining in human pregnant uterus with BRS3 polyclonal antibody (Cat # PAB16381).

Gene Info — BRS3

Entrez GeneID [680](#)

Protein Accession# [P32247](#)

Gene Name BRS3

Gene Alias -

Gene Description bombesin-like receptor 3

Omim ID [300107](#)

Gene Ontology [Hyperlink](#)

Gene Summary Mammalian bombesin-like peptides (see MIM 137260) are widely distributed in the central nervous system as well as in the gastrointestinal tract, where they modulate smooth-muscle contraction, exocrine and endocrine processes, metabolism, and behavior. They bind to G protein-coupled receptors on the cell surface to elicit their effects. Bombesin-like peptide receptors include gastrin-releasing peptide receptor (MIM 305670), neuromedin B receptor (MIM 162341), and bombesin-like receptor-3 (BRS3) (Ohki-Hamazaki et al., 1997).[supplied by OMIM]

Other Designations G-protein coupled receptor|OTTHUMP00000024342|bombesin receptor subtype 3

Pathway

- [Neuroactive ligand-receptor interaction](#)

Disease

- [Cardiovascular Diseases](#)

- [Diabetes Mellitus](#)
- [Edema](#)