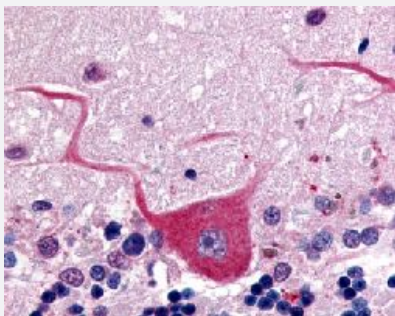


GPR32 polyclonal antibody

Catalog # PAB16378

Size 50 ug

Applications



Immunohistochemistry (Formalin/PFA-fixed paraffin-embedded sections)

Immunohistochemical (Formalin/PFA-fixed paraffin-embedded sections) staining in human cerebellum with GPR32 polyclonal antibody (Cat # PAB16378).

Specification

Product Description	Rabbit polyclonal antibody raised against synthetic peptide of GPR32.
Immunogen	A synthetic peptide (conjugated with KLH) corresponding to human GPR32.
Host	Rabbit
Reactivity	Human
Specificity	C-terminal domain of human.
Form	Liquid
Purification	Immunoaffinity purification
Recommend Usage	Immunohistochemistry (Formalin/PFA-fixed paraffin-embedded sections) (20 ug/mL) The optimal working dilution should be determined by the end user.
Storage Buffer	In PBS (0.09% sodium azide)
Storage Instruction	Store at 4°C. For long term storage store at -80°C. Aliquot to avoid repeated freezing and thawing.

Note

This product contains sodium azide: a POISONOUS AND HAZARDOUS SUBSTANCE which should be handled by trained staff only.

Applications

- Immunohistochemistry (Formalin/PFA-fixed paraffin-embedded sections)

Immunohistochemical (Formalin/PFA-fixed paraffin-embedded sections) staining in human cerebellum with GPR32 polyclonal antibody (Cat # PAB16378).

Gene Info — GPR32

Entrez GeneID	2854
Protein Accession#	O75388
Gene Name	GPR32
Gene Alias	-
Gene Description	G protein-coupled receptor 32
Omim ID	603195
Gene Ontology	Hyperlink
Other Designations	-