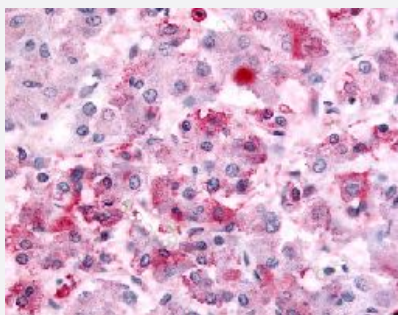


GPR152 polyclonal antibody

Catalog # PAB16369

Size 50 ug

Applications



Immunohistochemistry (Formalin/PFA-fixed paraffin-embedded sections)

Immunohistochemical (Formalin/PFA-fixed paraffin-embedded sections) staining in human adrenal medulla with GPR152 polyclonal antibody (Cat # PAB16369).

Specification

Product Description	Rabbit polyclonal antibody raised against synthetic peptide of GPR152.
Immunogen	A synthetic peptide (conjugated with KLH) corresponding to human GPR152.
Host	Rabbit
Reactivity	Human
Specificity	C-terminal domain of human.
Form	Liquid
Purification	Immunoaffinity purification
Recommend Usage	Immunohistochemistry (Formalin/PFA-fixed paraffin-embedded sections) (2.5 ug/mL) The optimal working dilution should be determined by the end user.
Storage Buffer	In PBS (0.09% sodium azide)
Storage Instruction	Store at 4°C. For long term storage store at -80°C. Aliquot to avoid repeated freezing and thawing.

Note

This product contains sodium azide: a POISONOUS AND HAZARDOUS SUBSTANCE which should be handled by trained staff only.

Applications

- Immunohistochemistry (Formalin/PFA-fixed paraffin-embedded sections)

Immunohistochemical (Formalin/PFA-fixed paraffin-embedded sections) staining in human adrenal medulla with GPR152 polyclonal antibody (Cat # PAB16369).

Gene Info — GPR152

Entrez GeneID	390212
Protein Accession#	Q8TDT2
Gene Name	GPR152
Gene Alias	MGC148162, PGR5
Gene Description	G protein-coupled receptor 152
Gene Ontology	Hyperlink
Other Designations	G protein-coupled receptor PGR5