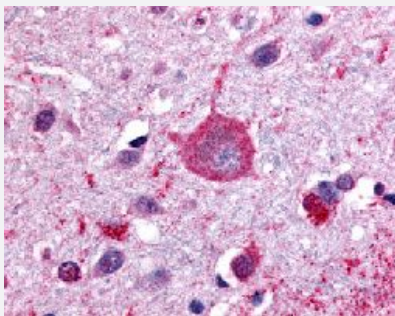


P2RY8 polyclonal antibody

Catalog # PAB16354

Size 50 ug

Applications



Immunohistochemistry (Formalin/PFA-fixed paraffin-embedded sections)

Immunohistochemical (Formalin/PFA-fixed paraffin-embedded sections) staining in human brain (cortex) with P2RY8 polyclonal antibody (Cat # PAB16354).

Specification

Product Description	Rabbit polyclonal antibody raised against synthetic peptide of P2RY8.
Immunogen	A synthetic peptide (conjugated with KLH) corresponding to human P2RY8.
Host	Rabbit
Reactivity	Human
Specificity	C-terminal Cytoplasmic domain of human.
Form	Liquid
Purification	Immunoaffinity purification
Recommend Usage	Immunohistochemistry (Formalin/PFA-fixed paraffin-embedded sections) (20 ug/mL) The optimal working dilution should be determined by the end user.
Storage Buffer	In PBS (0.09% sodium azide)
Storage Instruction	Store at 4°C. For long term storage store at -80°C. Aliquot to avoid repeated freezing and thawing.

Note

This product contains sodium azide: a POISONOUS AND HAZARDOUS SUBSTANCE which should be handled by trained staff only.

Applications

- Immunohistochemistry (Formalin/PFA-fixed paraffin-embedded sections)

Immunohistochemical (Formalin/PFA-fixed paraffin-embedded sections) staining in human brain (cortex) with P2RY8 polyclonal antibody (Cat # PAB16354).

Gene Info — P2RY8

Entrez GeneID [286530](#)

Protein Accession# [Q86VZ1](#)

Gene Name P2RY8

Gene Alias MGC50878, P2Y8

Gene Description purinergic receptor P2Y, G-protein coupled, 8

Omim ID [300525](#)

Gene Ontology [Hyperlink](#)

Gene Summary The protein encoded by this gene belongs to the family of G-protein coupled receptors, that are preferentially activated by adenosine and uridine nucleotides. This gene is moderately expressed in undifferentiated HL60 cells, and is located on both chromosomes X and Y. [provided by RefSeq]

Other Designations G-protein coupled purinergic receptor P2Y8|OTTHUMP00000022830

Pathway

- [Neuroactive ligand-receptor interaction](#)