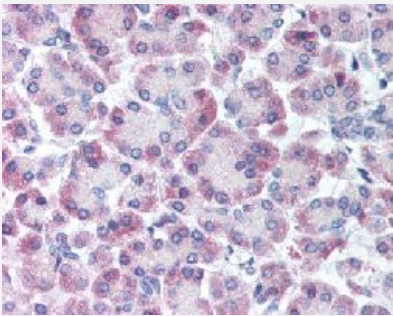


GPRC5C polyclonal antibody

Catalog # PAB16352

Size 50 ug

Applications



Immunohistochemistry (Formalin/PFA-fixed paraffin-embedded sections)

Immunohistochemical (Formalin/PFA-fixed paraffin-embedded sections) staining in human pancreas with GPRC5C polyclonal antibody (Cat # PAB16352).

Specification

Product Description	Rabbit polyclonal antibody raised against synthetic peptide of GPRC5C.
Immunogen	A synthetic peptide (conjugated with KLH) corresponding to human GPRC5C.
Host	Rabbit
Reactivity	Human, Mouse
Specificity	C-terminal Cytoplasmic domain of human.
Form	Liquid
Purification	Immunoaffinity purification
Recommend Usage	Immunohistochemistry (Formalin/PFA-fixed paraffin-embedded sections) (5 ug/mL) The optimal working dilution should be determined by the end user.
Storage Buffer	In PBS (0.09% sodium azide)
Storage Instruction	Store at 4°C. For long term storage store at -80°C. Aliquot to avoid repeated freezing and thawing.

Note

This product contains sodium azide: a POISONOUS AND HAZARDOUS SUBSTANCE which should be handled by trained staff only.

Applications

- Immunohistochemistry (Formalin/PFA-fixed paraffin-embedded sections)

Immunohistochemical (Formalin/PFA-fixed paraffin-embedded sections) staining in human pancreas with GPRC5C polyclonal antibody (Cat # PAB16352).

Gene Info — GPRC5C

Entrez GeneID [55890](#)

Protein Accession# [Q9NQ84](#)

Gene Name GPRC5C

Gene Alias MGC131820, RAIG-3, RAIG3

Gene Description G protein-coupled receptor, family C, group 5, member C

Omim ID [605949](#)

Gene Ontology [Hyperlink](#)

Gene Summary The protein encoded by this gene is a member of the type 3 G protein-coupled receptor family. Members of this superfamily are characterized by a signature 7-transmembrane domain motif. The specific function of this protein is unknown; however, this protein may mediate the cellular effects of retinoic acid on the G protein signal transduction cascade. Two transcript variants encoding different isoforms have been found for this gene. [provided by RefSeq]

Other Designations G protein-coupled receptor family C, group 5, member C|orphan G-protein coupled receptor|retinoic acid responsive gene protein