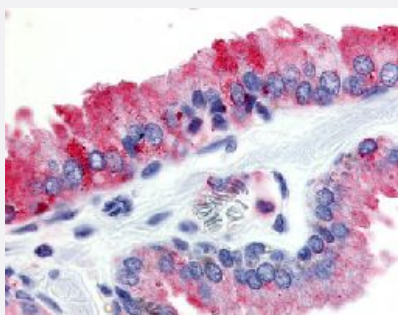


# GPR174 polyclonal antibody

Catalog # PAB16351

Size 50 ug

## Applications



### Immunohistochemistry (Formalin/PFA-fixed paraffin-embedded sections)

Immunohistochemical (Formalin/PFA-fixed paraffin-embedded sections) staining in human prostate with GPR174 polyclonal antibody (Cat # PAB16351).

## Specification

<b>Product Description</b>	Rabbit polyclonal antibody raised against synthetic peptide of GPR174.
<b>Immunogen</b>	A synthetic peptide (conjugated with KLH) corresponding to human GPR174.
<b>Host</b>	Rabbit
<b>Reactivity</b>	Human, Monkey, Mouse
<b>Specificity</b>	3rd Cytoplasmic domain of human.
<b>Form</b>	Liquid
<b>Purification</b>	Immunoaffinity purification
<b>Recommend Usage</b>	Immunohistochemistry (Formalin/PFA-fixed paraffin-embedded sections) (10 ug/mL) The optimal working dilution should be determined by the end user.
<b>Storage Buffer</b>	In PBS (0.09% sodium azide)
<b>Storage Instruction</b>	Store at 4°C. For long term storage store at -80°C. Aliquot to avoid repeated freezing and thawing.

**Note**

This product contains sodium azide: a POISONOUS AND HAZARDOUS SUBSTANCE which should be handled by trained staff only.

## Applications

- Immunohistochemistry (Formalin/PFA-fixed paraffin-embedded sections)

Immunohistochemical (Formalin/PFA-fixed paraffin-embedded sections) staining in human prostate with GPR174 polyclonal antibody (Cat # PAB16351).

## Gene Info — GPR174

Entrez GeneID	<a href="#">84636</a>
Protein Accession#	<a href="#">Q9BXC1</a>
Gene Name	GPR174
Gene Alias	FKSG79
Gene Description	G protein-coupled receptor 174
Gene Ontology	<a href="#">Hyperlink</a>
Other Designations	OTTHUMP00000023600 putative purinergic receptor putative purinergic receptor FKSG79