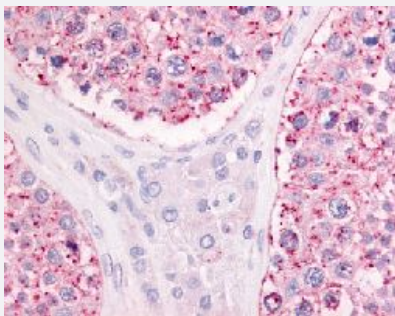


GPR68 polyclonal antibody

Catalog # PAB16346

Size 50 ug

Applications



Immunohistochemistry (Formalin/PFA-fixed paraffin-embedded sections)

Immunohistochemical (Formalin/PFA-fixed paraffin-embedded sections) staining in human testis with GPR68 polyclonal antibody (Cat # PAB16346).

Specification

Product Description	Rabbit polyclonal antibody raised against synthetic peptide of GPR68.
Immunogen	A synthetic peptide (conjugated with KLH) corresponding to human GPR68.
Host	Rabbit
Reactivity	Human, Monkey, Mouse, Rat
Specificity	1st extracellular domain of human.
Form	Liquid
Purification	Immunoaffinity purification
Recommend Usage	Immunohistochemistry (Formalin/PFA-fixed paraffin-embedded sections) (10-20 ug/mL) The optimal working dilution should be determined by the end user.
Storage Buffer	In PBS (0.09% sodium azide)
Storage Instruction	Store at 4°C. For long term storage store at -80°C. Aliquot to avoid repeated freezing and thawing.

Note

This product contains sodium azide: a POISONOUS AND HAZARDOUS SUBSTANCE which should be handled by trained staff only.

Applications

- Immunohistochemistry (Formalin/PFA-fixed paraffin-embedded sections)

Immunohistochemical (Formalin/PFA-fixed paraffin-embedded sections) staining in human testis with GPR68 polyclonal antibody (Cat # PAB16346).

Gene Info — GPR68

Entrez GeneID	8111
---------------	----------------------

Protein Accession#	Q15743
--------------------	------------------------

Gene Name	GPR68
-----------	-------

Gene Alias	MGC111379, MGC156983, OGR1
------------	----------------------------

Gene Description	G protein-coupled receptor 68
------------------	-------------------------------

Omim ID	601404
---------	------------------------

Gene Ontology	Hyperlink
---------------	---------------------------

Gene Summary	1
--------------	---

Other Designations	ovarian cancer G protein-coupled receptor, 1
--------------------	--