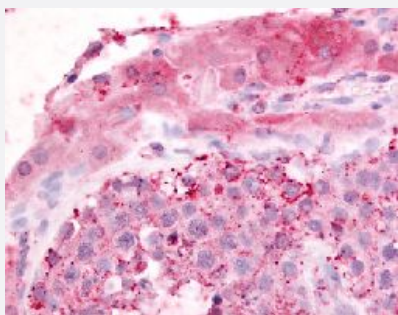


GPR182 polyclonal antibody

Catalog # PAB16341

Size 50 ug

Applications



Immunohistochemistry (Formalin/PFA-fixed paraffin-embedded sections)

Immunohistochemical (Formalin/PFA-fixed paraffin-embedded sections) staining in human testis with GPR182 polyclonal antibody (Cat # PAB16341).

Specification

Product Description	Rabbit polyclonal antibody raised against synthetic peptide of GPR182.
Immunogen	A synthetic peptide (conjugated with KLH) corresponding to human GPR182.
Host	Rabbit
Reactivity	Human, Mouse, Rat
Specificity	N-terminal domain of human.
Form	Liquid
Purification	Immunoaffinity purification
Recommend Usage	Immunohistochemistry (Formalin/PFA-fixed paraffin-embedded sections) (10 ug/mL) The optimal working dilution should be determined by the end user.
Storage Buffer	In PBS (0.09% sodium azide)
Storage Instruction	Store at 4°C. For long term storage store at -80°C. Aliquot to avoid repeated freezing and thawing.

Note

This product contains sodium azide: a POISONOUS AND HAZARDOUS SUBSTANCE which should be handled by trained staff only.

Applications

- Immunohistochemistry (Formalin/PFA-fixed paraffin-embedded sections)

Immunohistochemical (Formalin/PFA-fixed paraffin-embedded sections) staining in human testis with GPR182 polyclonal antibody (Cat # PAB16341).

Gene Info — GPR182

Entrez GeneID [11318](#)

Protein Accession# [Q15218](#)

Gene Name GPR182

Gene Alias 7TMR, ADMR, AM-R, AMR, G10D, MGC34399, gamrh, hrhAMR

Gene Description G protein-coupled receptor 182

Omim ID [605307](#)

Gene Ontology [Hyperlink](#)

Gene Summary Adrenomedullin is a potent vasodilator peptide that exerts major effects on cardiovascular function. This gene encodes a seven-transmembrane protein that belongs to the family 1 of G-protein coupled receptors. Studies of the rat counterpart suggest that the encoded protein may function as a receptor for adrenomedullin. [provided by RefSeq]

Other Designations adrenomedullin receptor