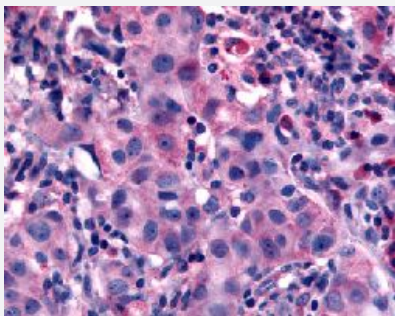


NANP polyclonal antibody

Catalog # PAB16320

Size 50 ug

Applications



Immunohistochemistry (Formalin/PFA-fixed paraffin-embedded sections)

Immunohistochemical (Formalin/PFA-fixed paraffin-embedded sections) staining in human neoplastic cells with NANP polyclonal antibody (Cat # PAB16320).

Specification

Product Description	Rabbit polyclonal antibody raised against synthetic peptide of NANP.
Immunogen	A synthetic peptide (conjugated with KLH) corresponding to human NANP.
Host	Rabbit
Reactivity	Human, Monkey
Specificity	N-terminal region of human.
Form	Liquid
Purification	Immunoaffinity purification
Recommend Usage	Immunohistochemistry (Formalin/PFA-fixed paraffin-embedded sections) (15-20 ug/mL) The optimal working dilution should be determined by the end user.
Storage Buffer	In PBS (0.09% sodium azide)
Storage Instruction	Store at 4°C. For long term storage store at -80°C. Aliquot to avoid repeated freezing and thawing.

Note

This product contains sodium azide: a POISONOUS AND HAZARDOUS SUBSTANCE which should be handled by trained staff only.

Applications

- Immunohistochemistry (Formalin/PFA-fixed paraffin-embedded sections)

Immunohistochemical (Formalin/PFA-fixed paraffin-embedded sections) staining in human neoplastic cells with NANP polyclonal antibody (Cat # PAB16320).

Gene Info — NANP

Entrez GeneID [140838](#)

Protein Accession# [Q8TBE9](#)

Gene Name NANP

Gene Alias C20orf147, HDHD4, MGC26833, dJ694B14.3

Gene Description N-acetylneuraminic acid phosphatase

Omim ID [610763](#)

Gene Ontology [Hyperlink](#)

Other Designations OTTHUMP00000030503|haloacid dehalogenase-like hydrolase domain containing 4

Pathway

- [Amino sugar and nucleotide sugar metabolism](#)
- [Metabolic pathways](#)