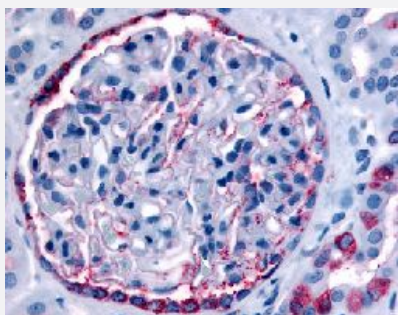


# INPP5J polyclonal antibody

Catalog # PAB16313

Size 50 ug

## Applications



### Immunohistochemistry (Formalin/PFA-fixed paraffin-embedded sections)

Immunohistochemical (Formalin/PFA-fixed paraffin-embedded sections) staining in human glomerulus and renal tubular epithelium in cortex with INPP5J polyclonal antibody (Cat # PAB16313).

## Specification

<b>Product Description</b>	Rabbit polyclonal antibody raised against synthetic peptide of INPP5J.
<b>Immunogen</b>	A synthetic peptide (conjugated with KLH) corresponding to human INPP5J.
<b>Host</b>	Rabbit
<b>Reactivity</b>	Horse, Human, Pig
<b>Specificity</b>	Internal domain of human.
<b>Form</b>	Liquid
<b>Purification</b>	Immunoaffinity purification
<b>Recommend Usage</b>	Immunohistochemistry (Formalin/PFA-fixed paraffin-embedded sections) (10-15 ug/mL) The optimal working dilution should be determined by the end user.
<b>Storage Buffer</b>	In PBS (0.09% sodium azide)
<b>Storage Instruction</b>	Store at 4°C. For long term storage store at -80°C. Aliquot to avoid repeated freezing and thawing.

**Note**

This product contains sodium azide: a POISONOUS AND HAZARDOUS SUBSTANCE which should be handled by trained staff only.

## Applications

- Immunohistochemistry (Formalin/PFA-fixed paraffin-embedded sections)

Immunohistochemical (Formalin/PFA-fixed paraffin-embedded sections) staining in human glomerulus and renal tubular epithelium in cortex with INPP5J polyclonal antibody (Cat # PAB16313).

## Gene Info — INPP5J

Entrez GeneID [27124](#)

Protein Accession# [Q15735](#)

Gene Name INPP5J

Gene Alias INPP5, MGC129984, PIB5PA, PIPP

Gene Description inositol polyphosphate-5-phosphatase J

Omim ID [606481](#)

Gene Ontology [Hyperlink](#)

Gene Summary 5) bisphosphate 5-phosphatase

Other Designations inositol polyphosphate 5-phosphatase|phosphatidylinositol (4,5) bisphosphate 5-phosphatase, A

## Pathway

- [Inositol phosphate metabolism](#)
- [Metabolic pathways](#)
- [Phosphatidylinositol signaling system](#)