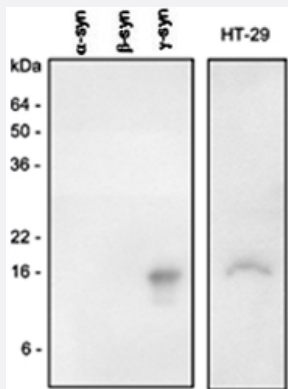


# SNCG polyclonal antibody

Catalog # PAB1627      Size 100 uL

## Applications



### Western Blot

Western blot analysis of recombinant synuclein family (alpha - , beta - and gamma -) and HT - 29 (colon adenocarcinoma) cell extracts were resolved by SDS - PAGE , transferred to PVDF membrane and probed with polyclonal SNCG polyclonal antibody (1 : 1000) (Cat # PAB1627) . Proteins were visualized using a goat anti - rabbit secondary antibody conjugated to HRP and the ECL detection system.

## Specification

<b>Product Description</b>	Rabbit polyclonal antibody raised against full length recombinant SNCG.
<b>Immunogen</b>	Recombinant protein corresponding to full length human SNCG.
<b>Host</b>	Rabbit
<b>Reactivity</b>	Human
<b>Specificity</b>	This antibody is specific to SNCG and does not cross-react with SNCA and SNCB.
<b>Form</b>	Liquid
<b>Purification</b>	Protein A purification
<b>Recommend Usage</b>	ELISA Western Blot The optimal working dilution should be determined by the end user.
<b>Storage Buffer</b>	In PBS, pH 7.4 (10% glycerol, 0.02% sodium azide).

**Storage Instruction**

Store at 2°C to 8°C for 1 week. For long term storage, aliquot and store at -20°C to -80°C.  
Aliquot to avoid repeated freezing and thawing.

**Note**

This product contains sodium azide: a POISONOUS AND HAZARDOUS SUBSTANCE which should be handled by trained staff only.

## Applications

- Western Blot

Western blot analysis of recombinant synuclein family (alpha -, beta - and gamma -) and HT - 29 (colon adenocarcinoma) cell extracts were resolved by SDS - PAGE , transferred to PVDF membrane and probed with polyclonal SNCG polyclonal antibody (1 : 1000) (Cat # PAB1627) . Proteins were visualized using a goat anti - rabbit secondary antibody conjugated to HRP and the ECL detection system.

- Enzyme-linked Immunoabsorbent Assay

## Gene Info — SNCG

**Entrez GeneID** [6623](#)

**Protein Accession#** [NP\\_003078.2](#)

**Gene Name** SNCG

**Gene Alias** BCSG1, SR

**Gene Description** synuclein, gamma (breast cancer-specific protein 1)

**Omim ID** [602998](#)

**Gene Ontology** [Hyperlink](#)

**Gene Summary** Summary: This gene encodes a member of the synuclein family of proteins which are believed to be involved in the pathogenesis of neurodegenerative diseases. Mutations in this gene have also been associated with breast tumor development. [provided by RefSeq]

**Other Designations** OTTHUMP00000020013|breast cancer-specific protein 1|persyn|synoretin|synuclein, gamma (breast cancer-specific gene 1)

## Publication Reference

- [Loss of epigenetic control of synuclein-gamma gene as a molecular indicator of metastasis in a wide range of human cancers.](#)

Liu H, Liu W, Wu Y, Zhou Y, Xue R, Luo C, Wang L, Zhao W, Jiang JD, Liu J.

Cancer Research 2005 Sep; 65(17):7635.

Application: IHC-P, Human, Human cancer tissues

- [The synucleins.](#)

George JM.

Genome Biol 2001 Dec; 3(1):REVIEWS300.

Application: IHC, WB, Bovine, Chicken, Human, Mouse, Rat, Brains, Cancers

- [Identification of a breast cancer-specific gene, BCSG1, by direct differential cDNA sequencing.](#)

Ji H, Liu YE, Jia T, Wang M, Liu J, Xiao G, Joseph BK, Rosen C, Shi YE.

Cancer Research 1997 Feb; 57(4):759.

## Disease

- [Alzheimer disease](#)
- [Parkinson disease](#)