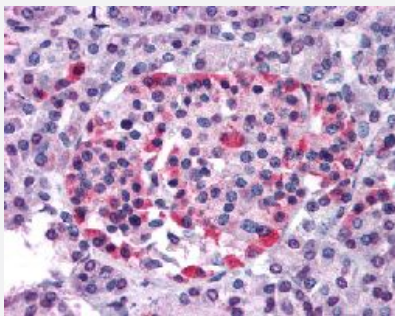


GPR81 polyclonal antibody

Catalog # PAB16254

Size 50 ug

Applications



Immunohistochemistry (Formalin/PFA-fixed paraffin-embedded sections)

Immunohistochemical (Formalin/PFA-fixed paraffin-embedded sections) staining in human pancreas with GPR81 polyclonal antibody (Cat # PAB16254).

Specification

Product Description	Rabbit polyclonal antibody raised against synthetic peptide of GPR81.
Immunogen	A synthetic peptide (conjugated with KLH) corresponding to human GPR81.
Host	Rabbit
Reactivity	Human, Monkey, Mouse, Rat
Specificity	N-terminal extracellular domain of human.
Form	Liquid
Purification	Immunoaffinity purification
Recommend Usage	Immunohistochemistry (Formalin/PFA-fixed paraffin-embedded sections) (20 ug/mL) The optimal working dilution should be determined by the end user.
Storage Buffer	In PBS (0.09% sodium azide)
Storage Instruction	Store at 4°C. For long term storage store at -80°C. Aliquot to avoid repeated freezing and thawing.

Note

This product contains sodium azide: a POISONOUS AND HAZARDOUS SUBSTANCE which should be handled by trained staff only.

Applications

- Immunohistochemistry (Formalin/PFA-fixed paraffin-embedded sections)

Immunohistochemical (Formalin/PFA-fixed paraffin-embedded sections) staining in human pancreas with GPR81 polyclonal antibody (Cat # PAB16254).

Gene Info — GPR81

Entrez GeneID [27198](#)

Protein Accession# [Q9BXC0](#)

Gene Name GPR81

Gene Alias FKSG80, GPR104, TA-GPCR

Gene Description G protein-coupled receptor 81

Omim ID [606923](#)

Gene Ontology [Hyperlink](#)

Gene Summary G protein-coupled receptors (GPCRs, or GPRs), such as GPR81, contain 7 transmembrane domains and transduce extracellular signals through heterotrimeric G proteins.[supplied by OMIM]

Other Designations G protein-coupled receptor 104|T-cell activation G protein-coupled receptor|putative chemokine receptor

Disease

- [Cardiovascular Diseases](#)
- [Diabetes Mellitus](#)
- [Edema](#)