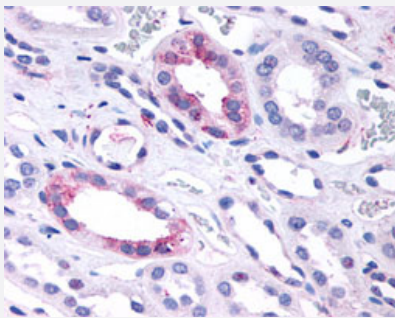


GPR146 polyclonal antibody

Catalog # PAB16240

Size 50 ug

Applications



Immunohistochemistry (Formalin/PFA-fixed paraffin-embedded sections)

Immunohistochemical (Formalin/PFA-fixed paraffin-embedded sections) staining of human kidney with GPR146 polyclonal antibody (Cat # PAB16240).

Specification

Product Description	Rabbit polyclonal antibody raised against synthetic peptide of GPR146.
Immunogen	A synthetic peptide (conjugated with KLH) corresponding to human GPR146.
Host	Rabbit
Reactivity	Human
Specificity	C-terminal cytoplasmic domain of human .
Form	Liquid
Purification	Immunoaffinity purification
Recommend Usage	Immunohistochemistry (Formalin/PFA-fixed paraffin-embedded sections) (14 ug/mL) The optimal working dilution should be determined by the end user.
Storage Buffer	In PBS (0.09% sodium azide)
Storage Instruction	Store at 4°C. For long term storage store at -80°C. Aliquot to avoid repeated freezing and thawing.

Note

This product contains sodium azide: a POISONOUS AND HAZARDOUS SUBSTANCE which should be handled by trained staff only.

Applications

- Immunohistochemistry (Formalin/PFA-fixed paraffin-embedded sections)

Immunohistochemical (Formalin/PFA-fixed paraffin-embedded sections) staining of human kidney with GPR146 polyclonal antibody (Cat # PAB16240).

Gene Info — GPR146

Entrez GeneID	115330
---------------	------------------------

Protein Accession#	Q96CH1
--------------------	------------------------

Gene Name	GPR146
-----------	--------

Gene Alias	PGR8
------------	------

Gene Description	G protein-coupled receptor 146
------------------	--------------------------------

Gene Ontology	Hyperlink
---------------	---------------------------

Other Designations	G protein-coupled receptor PGR8 OTTHUMP00000115491
--------------------	--