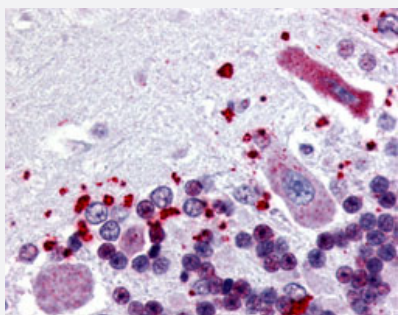


NPBWR1 polyclonal antibody

Catalog # PAB16235

Size 50 ug

Applications



Immunohistochemistry (Formalin/PFA-fixed paraffin-embedded sections)

Immunohistochemical (Formalin/PFA-fixed paraffin-embedded sections) staining of human cerebellum with NPBWR1 polyclonal antibody (Cat # PAB16235).

Specification

| | |
|----------------------------|---|
| Product Description | Rabbit polyclonal antibody raised against synthetic peptide of NPBWR1. |
| Immunogen | A synthetic peptide (conjugated with KLH) corresponding to human NPBWR1. |
| Host | Rabbit |
| Reactivity | Human, Mouse |
| Specificity | 3rd cytoplasmic domain of human. Predicted crossreactivity with mouse due to sequence similarity . |
| Form | Liquid |
| Purification | Immunoaffinity purification |
| Recommend Usage | Immunohistochemistry (Formalin/PFA-fixed paraffin-embedded sections) (20 ug/mL) The optimal working dilution should be determined by the end user. |
| Storage Buffer | In PBS (0.09% sodium azide) |
| Storage Instruction | Store at 4°C. For long term storage store at -80°C. Aliquot to avoid repeated freezing and thawing. |

Note

This product contains sodium azide: a POISONOUS AND HAZARDOUS SUBSTANCE which should be handled by trained staff only.

Applications

- Immunohistochemistry (Formalin/PFA-fixed paraffin-embedded sections)

Immunohistochemical (Formalin/PFA-fixed paraffin-embedded sections) staining of human cerebellum with NPBWR1 polyclonal antibody (Cat # PAB16235).

Gene Info — NPBWR1

| | |
|--------------------|--|
| Entrez GeneID | 2831 |
| Protein Accession# | P48145 |
| Gene Name | NPBWR1 |
| Gene Alias | GPR7, MGC129755 |
| Gene Description | neuropeptides B/W receptor 1 |
| Omim ID | 600730 |
| Gene Ontology | Hyperlink |
| Other Designations | G protein-coupled receptor 7 neuropeptides B/W receptor type 1 opioid-somatostatin-like receptor 7 |

Pathway

- [Neuroactive ligand-receptor interaction](#)