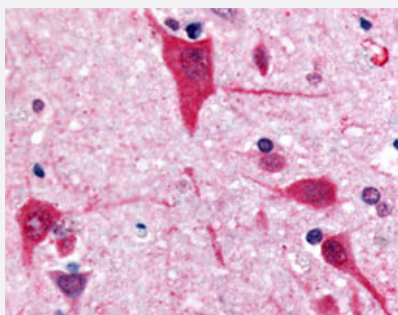


GPR61 polyclonal antibody

Catalog # PAB16234

Size 50 ug

Applications



Immunohistochemistry (Formalin/PFA-fixed paraffin-embedded sections)

Immunohistochemical (Formalin/PFA-fixed paraffin-embedded sections) staining in human cortex of brain with GPR61 polyclonal antibody (Cat # PAB16234).

Specification

Product Description	Rabbit polyclonal antibody raised against synthetic peptide of GPR61.
Immunogen	A synthetic peptide (conjugated with KLH) corresponding to human GPR61.
Host	Rabbit
Reactivity	Human, Monkey
Specificity	C-terminal domain of human .
Form	Liquid
Purification	Immunoaffinity purification
Recommend Usage	Immunohistochemistry (Formalin/PFA-fixed paraffin-embedded sections) (10 ug/mL) The optimal working dilution should be determined by the end user.
Storage Buffer	In PBS (0.09% sodium azide)
Storage Instruction	Store at 4°C. For long term storage store at -80°C. Aliquot to avoid repeated freezing and thawing.

Note

This product contains sodium azide: a POISONOUS AND HAZARDOUS SUBSTANCE which should be handled by trained staff only.

Applications

- Immunohistochemistry (Formalin/PFA-fixed paraffin-embedded sections)

Immunohistochemical (Formalin/PFA-fixed paraffin-embedded sections) staining in human cortex of brain with GPR61 polyclonal antibody (Cat # PAB16234).

Gene Info — GPR61

Entrez GeneID [83873](#)

Protein Accession# [Q9BZJ8](#)

Gene Name GPR61

Gene Alias BALGR, GPCR3

Gene Description G protein-coupled receptor 61

Omim ID [606916](#)

Gene Ontology [Hyperlink](#)

Gene Summary This gene belongs to the G-protein coupled receptor 1 family. G protein-coupled receptors contain 7 transmembrane domains and transduce extracellular signals through heterotrimeric G proteins. The protein encoded by this gene is most closely related to biogenic amine receptors. [provided by RefSeq]

Other Designations OTTHUMP00000013345|biogenic amine receptor-like GPCR