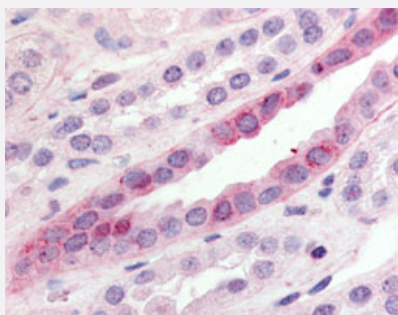


# GPR15 polyclonal antibody

Catalog # PAB16214

Size 50 ug

## Applications



### Immunohistochemistry (Formalin/PFA-fixed paraffin-embedded sections)

Immunohistochemical (Formalin/PFA-fixed paraffin-embedded sections) staining of human kidney with GPR15 polyclonal antibody (Cat # PAB16214).

## Specification

<b>Product Description</b>	Rabbit polyclonal antibody raised against synthetic peptide of GPR15.
<b>Immunogen</b>	A synthetic peptide (conjugated with KLH) corresponding to human GPR15.
<b>Host</b>	Rabbit
<b>Reactivity</b>	Human
<b>Specificity</b>	C-terminal cytoplasmic domain of human .
<b>Form</b>	Liquid
<b>Purification</b>	Immunoaffinity purification
<b>Recommend Usage</b>	Immunohistochemistry (Formalin/PFA-fixed paraffin-embedded sections) (10 ug/mL) The optimal working dilution should be determined by the end user.
<b>Storage Buffer</b>	In PBS (0.09% sodium azide)
<b>Storage Instruction</b>	Store at 4°C. For long term storage store at -80°C. Aliquot to avoid repeated freezing and thawing.

**Note**

This product contains sodium azide: a POISONOUS AND HAZARDOUS SUBSTANCE which should be handled by trained staff only.

## Applications

- Immunohistochemistry (Formalin/PFA-fixed paraffin-embedded sections)

Immunohistochemical (Formalin/PFA-fixed paraffin-embedded sections) staining of human kidney with GPR15 polyclonal antibody (Cat # PAB16214).

## Gene Info — GPR15

Entrez GeneID	<a href="#">2838</a>
---------------	----------------------

Protein Accession#	<a href="#">P49685</a>
--------------------	------------------------

Gene Name	GPR15
-----------	-------

Gene Alias	MGC126828, MGC126830
------------	----------------------

Gene Description	G protein-coupled receptor 15
------------------	-------------------------------

Omim ID	<a href="#">601166</a>
---------	------------------------

Gene Ontology	<a href="#">Hyperlink</a>
---------------	---------------------------

Other Designations	-
--------------------	---