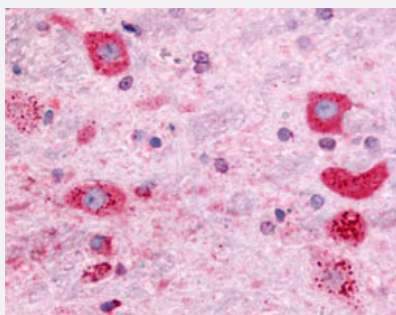


GPR171 polyclonal antibody

Catalog # PAB16205

Size 50 ug

Applications



Immunohistochemistry (Formalin/PFA-fixed paraffin-embedded sections)

Immunohistochemical (Formalin/PFA-fixed paraffin-embedded sections) staining in rat neurons of brain with GPR171 polyclonal antibody (Cat # PAB16205).

Specification

Product Description	Rabbit polyclonal antibody raised against synthetic peptide of GPR171.
Immunogen	A synthetic peptide (conjugated with KLH) corresponding to human GPR171.
Host	Rabbit
Reactivity	Bovine, Human, Monkey, Rabbit, Rat
Specificity	3rd extracellular domain of human .
Form	Liquid
Purification	Immunoaffinity purification
Recommend Usage	Immunohistochemistry (Formalin/PFA-fixed paraffin-embedded sections) (10 ug/mL) The optimal working dilution should be determined by the end user.
Storage Buffer	In PBS (0.09% sodium azide)
Storage Instruction	Store at 4°C. For long term storage store at -80°C. Aliquot to avoid repeated freezing and thawing.

Note

This product contains sodium azide: a POISONOUS AND HAZARDOUS SUBSTANCE which should be handled by trained staff only.

Applications

- Immunohistochemistry (Formalin/PFA-fixed paraffin-embedded sections)

Immunohistochemical (Formalin/PFA-fixed paraffin-embedded sections) staining in rat neurons of brain with GPR171 polyclonal antibody (Cat # PAB16205).

Gene Info — GPR171

Entrez GeneID	29909
---------------	-----------------------

Protein Accession#	O14626
--------------------	------------------------

Gene Name	GPR171
-----------	--------

Gene Alias	H963
------------	------

Gene Description	G protein-coupled receptor 171
------------------	--------------------------------

Gene Ontology	Hyperlink
---------------	---------------------------

Other Designations	F730001G15Rik platelet activating receptor homolog
--------------------	--