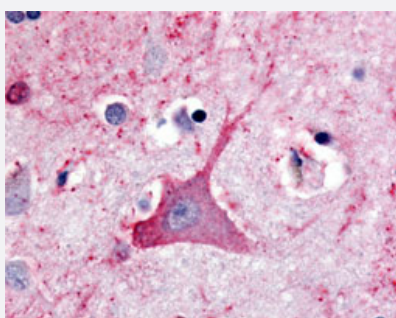


# TRHR polyclonal antibody

Catalog # PAB16204

Size 50 ug

## Applications



### Immunohistochemistry (Formalin/PFA-fixed paraffin-embedded sections)

Immunohistochemical (Formalin/PFA-fixed paraffin-embedded sections) staining in human neurons of brain with TRHR polyclonal antibody (Cat # PAB16204).

## Specification

<b>Product Description</b>	Rabbit polyclonal antibody raised against synthetic peptide of TRHR.
<b>Immunogen</b>	A synthetic peptide (conjugated with KLH) corresponding to human TRHR.
<b>Host</b>	Rabbit
<b>Reactivity</b>	Dog, Horse, Human, Pig, Sheep
<b>Specificity</b>	C-terminal domain of human..
<b>Form</b>	Liquid
<b>Purification</b>	Immunoaffinity purification
<b>Recommend Usage</b>	Immunohistochemistry (Formalin/PFA-fixed paraffin-embedded sections) (20 ug/mL) The optimal working dilution should be determined by the end user.
<b>Storage Buffer</b>	In PBS (0.09% sodium azide)
<b>Storage Instruction</b>	Store at 4°C. For long term storage store at -80°C. Aliquot to avoid repeated freezing and thawing.

**Note**

This product contains sodium azide: a POISONOUS AND HAZARDOUS SUBSTANCE which should be handled by trained staff only.

## Applications

- Immunohistochemistry (Formalin/PFA-fixed paraffin-embedded sections)

Immunohistochemical (Formalin/PFA-fixed paraffin-embedded sections) staining in human neurons of brain with TRHR polyclonal antibody (Cat # PAB16204).

## Gene Info — TRHR

Entrez GeneID [7201](#)

Protein Accession# [P34981](#)

Gene Name TRHR

Gene Alias MGC141920

Gene Description thyrotropin-releasing hormone receptor

Omim ID [188545](#)

Gene Ontology [Hyperlink](#)

**Gene Summary** Thyrotropin-releasing hormone (TRH; MIM 275120), a small neuropeptide, is widely distributed throughout the central and peripheral nervous system as well as in extraneural tissues. The peptide is synthesized in the hypothalamus and transported by the portal vascular system to the anterior pituitary where it acts on thyrotropic and lactotropic cells to promote secretion of TSH and prolactin, respectively. Thyrotropin-releasing hormone receptor is a G protein-coupled receptor that activates the inositol phospholipid-calcium-protein kinase C transduction pathway upon the binding of TRH. The TRHR gene is expressed in the thyrotrope cells of the anterior pituitary.[supplied by OMIM]

Other Designations -

## Pathway

- [Calcium signaling pathway](#)
- [Neuroactive ligand-receptor interaction](#)

## Disease

- [Genetic Predisposition to Disease](#)
- [Hypertension](#)
- [Mental Disorders](#)
- [Obesity](#)
- [Thinness](#)