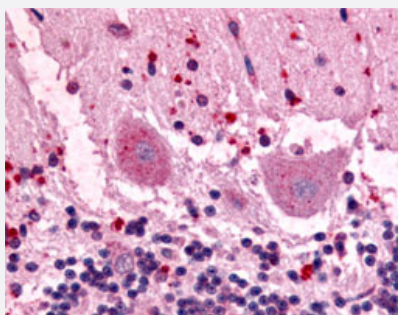


GPR3 polyclonal antibody

Catalog # PAB16203

Size 50 ug

Applications



Immunohistochemistry (Formalin/PFA-fixed paraffin-embedded sections)

Immunohistochemical (Formalin/PFA-fixed paraffin-embedded sections) staining of human brain with GPR3 polyclonal antibody (Cat # PAB16203).

Specification

Product Description	Rabbit polyclonal antibody raised against synthetic peptide of GPR3.
Immunogen	A synthetic peptide (conjugated with KLH) corresponding to human GPR3.
Host	Rabbit
Reactivity	Human, Monkey, Mouse, Rat
Specificity	N-terminal extracellular domain of human. Predicted crossreactivity with mouse and rat due to sequence similarity.
Form	Liquid
Purification	Immunoaffinity purification
Recommend Usage	Immunohistochemistry (Formalin/PFA-fixed paraffin-embedded sections) (10 ug/mL) The optimal working dilution should be determined by the end user.
Storage Buffer	In PBS (0.09% sodium azide)
Storage Instruction	Store at 4°C. For long term storage store at -80°C. Aliquot to avoid repeated freezing and thawing.

Note

This product contains sodium azide: a POISONOUS AND HAZARDOUS SUBSTANCE which should be handled by trained staff only.

Applications

- Immunohistochemistry (Formalin/PFA-fixed paraffin-embedded sections)

Immunohistochemical (Formalin/PFA-fixed paraffin-embedded sections) staining of human brain with GPR3 polyclonal antibody (Cat # PAB16203).

Gene Info — GPR3

Entrez GeneID	2827
Protein Accession#	P46089
Gene Name	GPR3
Gene Alias	ACCA
Gene Description	G protein-coupled receptor 3
Omim ID	600241
Gene Ontology	Hyperlink
Other Designations	OTTHUMP00000003475 OTTHUMP00000043209 adenylate cyclase constitutive activator

Disease

- [Genetic Predisposition to Disease](#)
- [Ovarian Failure](#)