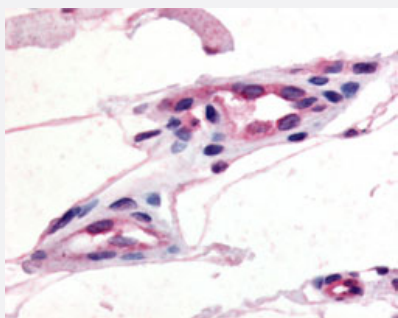


# GPR21 polyclonal antibody

Catalog # PAB16201

Size 50 ug

## Applications



### Immunohistochemistry (Formalin/PFA-fixed paraffin-embedded sections)

Immunohistochemical (Formalin/PFA-fixed paraffin-embedded sections) staining of human capillaries with GPR21 polyclonal antibody (Cat # PAB16201).

## Specification

<b>Product Description</b>	Rabbit polyclonal antibody raised against synthetic peptide of GPR21.
<b>Immunogen</b>	A synthetic peptide (conjugated with KLH) corresponding to human GPR21.
<b>Host</b>	Rabbit
<b>Reactivity</b>	Bovine, Dog, Human, Monkey, Mouse, Pig, Rat
<b>Specificity</b>	C-terminal domain of human. Predicted crossreactivity with mouse due to sequence similarity .
<b>Form</b>	Liquid
<b>Purification</b>	Immunoaffinity purification
<b>Recommend Usage</b>	Immunohistochemistry (Formalin/PFA-fixed paraffin-embedded sections) (5 ug/mL) The optimal working dilution should be determined by the end user.
<b>Storage Buffer</b>	In PBS (0.09% sodium azide)
<b>Storage Instruction</b>	Store at 4°C. For long term storage store at -80°C. Aliquot to avoid repeated freezing and thawing.

**Note**

This product contains sodium azide: a POISONOUS AND HAZARDOUS SUBSTANCE which should be handled by trained staff only.

## Applications

- Immunohistochemistry (Formalin/PFA-fixed paraffin-embedded sections)

Immunohistochemical (Formalin/PFA-fixed paraffin-embedded sections) staining of human capillaries with GPR21 polyclonal antibody (Cat # PAB16201).

## Gene Info — GPR21

Entrez GeneID	<a href="#">2844</a>
---------------	----------------------

Protein Accession#	<a href="#">Q99679</a>
--------------------	------------------------

Gene Name	GPR21
-----------	-------

Gene Alias	-
------------	---

Gene Description	G protein-coupled receptor 21
------------------	-------------------------------

Omim ID	<a href="#">601909</a>
---------	------------------------

Gene Ontology	<a href="#">Hyperlink</a>
---------------	---------------------------

Other Designations	OTTHUMP00000022075
--------------------	--------------------